

Today, some twenty miles east of Edinburgh, the ruined **yellow clustered towers** of Dirleton castle high on its rocky knoll overlooking the Victorian Bowling Green and Herbaceous gardens strikes an **imposing** sight. However, the present gardens (arts and crafts north garden and formal west garden) give a false peaceful impression as to the castle's original **war-like strength**. In ancient times this whole area was marsh land and the castle's rocky knoll itself was surrounded by a deep fresh water ditch, shielded by a wooden palisade which extended east to **protect** the castle-town village, as well as two drawbridges, one postern foot bridge facing east to the village and one large bridge for horse, cattle and wagon access facing south.

Not forgetting the castle itself which contained five round towers, three being **D-shaped in plan** and two Donjon type with a further two square plan towers all connected by a battlement wall hugging the rock knoll giving the **confused** plan we see today.

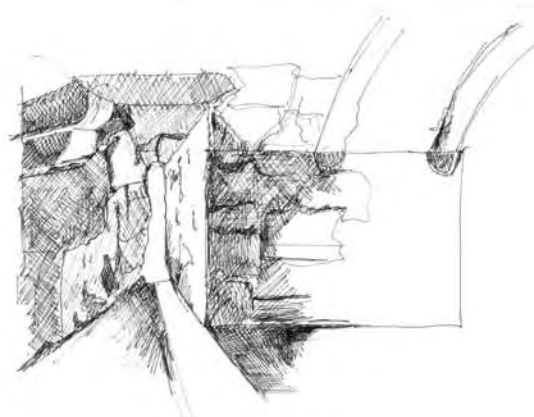
[Andrew Spratt
<http://www.maybole.org/history/castles/dirleton.htm>]

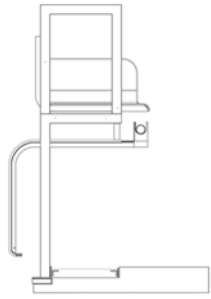
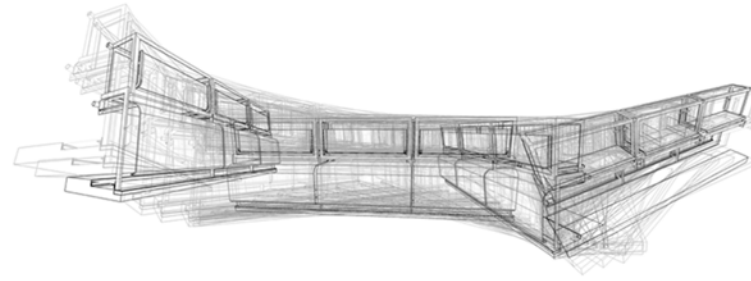
Your first feeling is that this has to be a **fanciful ornament** placed here by the designer of the garden as an attractive and ruinous **folly**. It isn't: what you stumble across in Dirleton Gardens is one of the very best castles in Scotland. If you like gardens, all the better. But even if you don't, this is still an absolutely must-visit castle: **fascinating** and beautiful, and far more **complex** than it at first appears.

[<http://www.undiscoveredscotland.co.uk/dirleton/dirletoncastle/>]

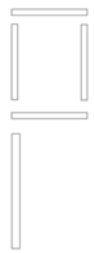


The Pantheon Kitchen





H.01



H.02



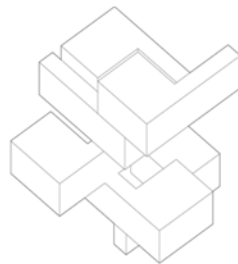
H.03



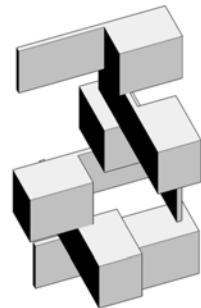
H.04



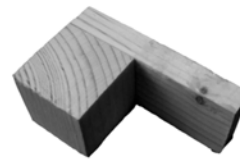
H.05



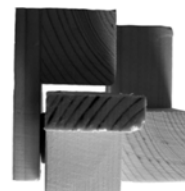
H.06



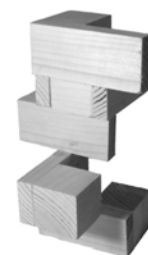
H.07



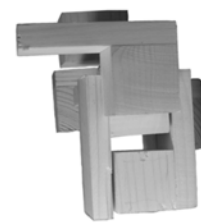
H.08



H.09



H.10



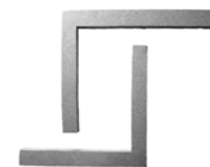
H.11



H.12



H.13



H.14



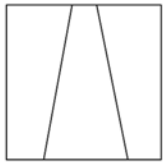
H.15



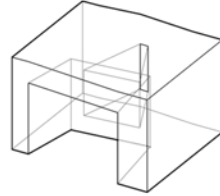
H.16



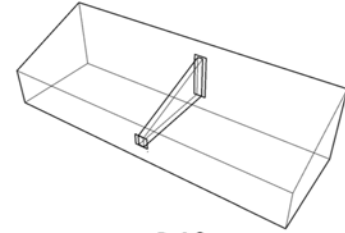
H.17



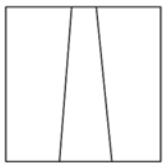
B.01



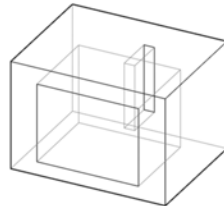
B.07



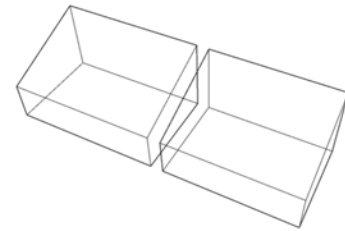
B.13



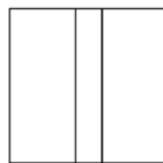
B.02



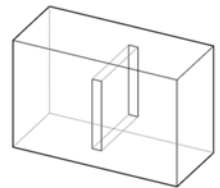
B.08



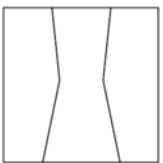
B.14



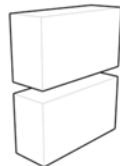
B.03



B.09



B.04



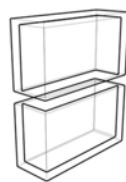
B.10



B.15



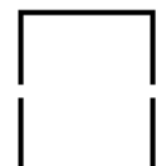
B.05



B.11



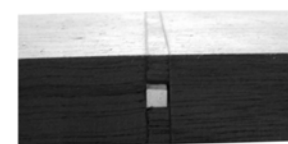
B.16



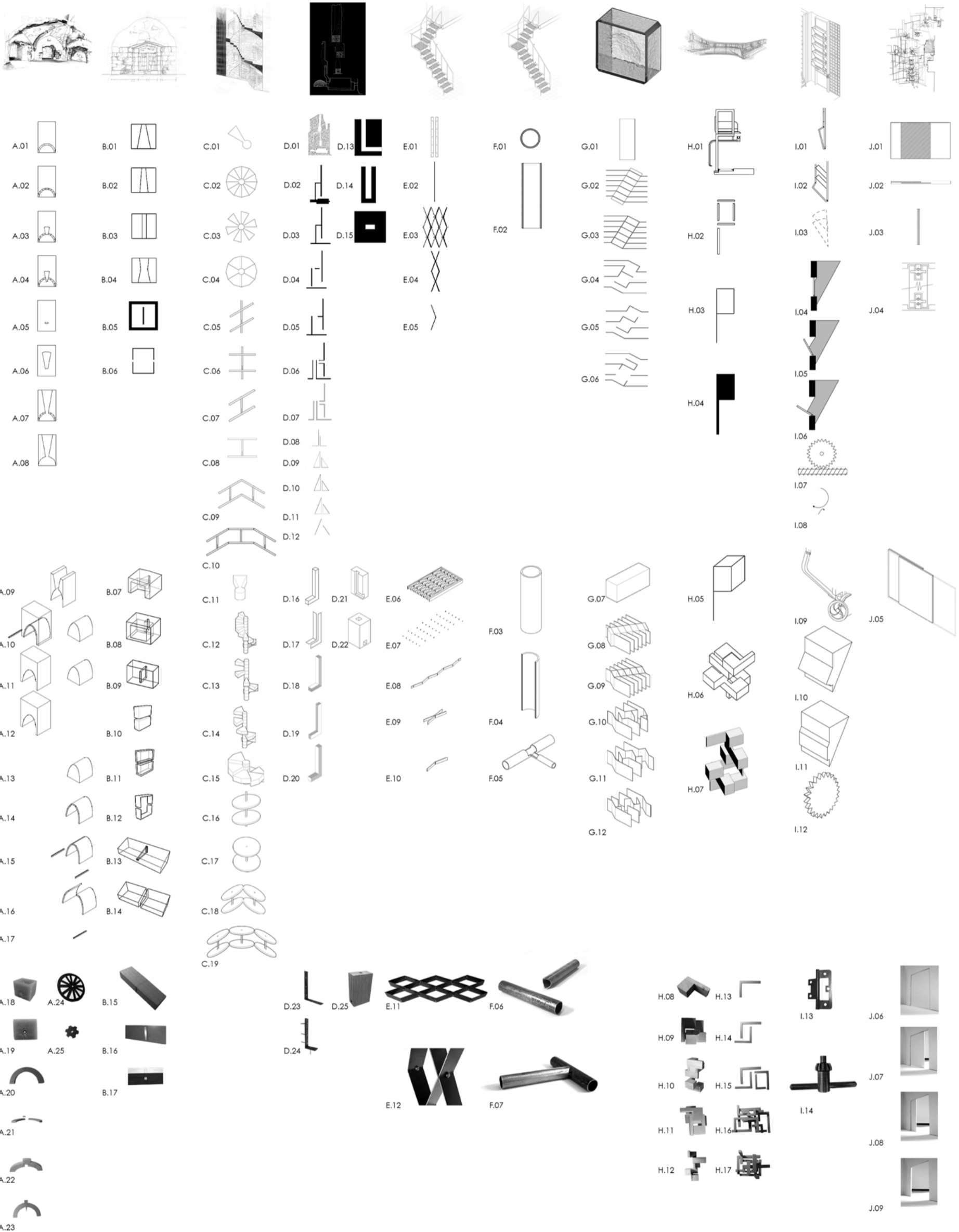
B.06

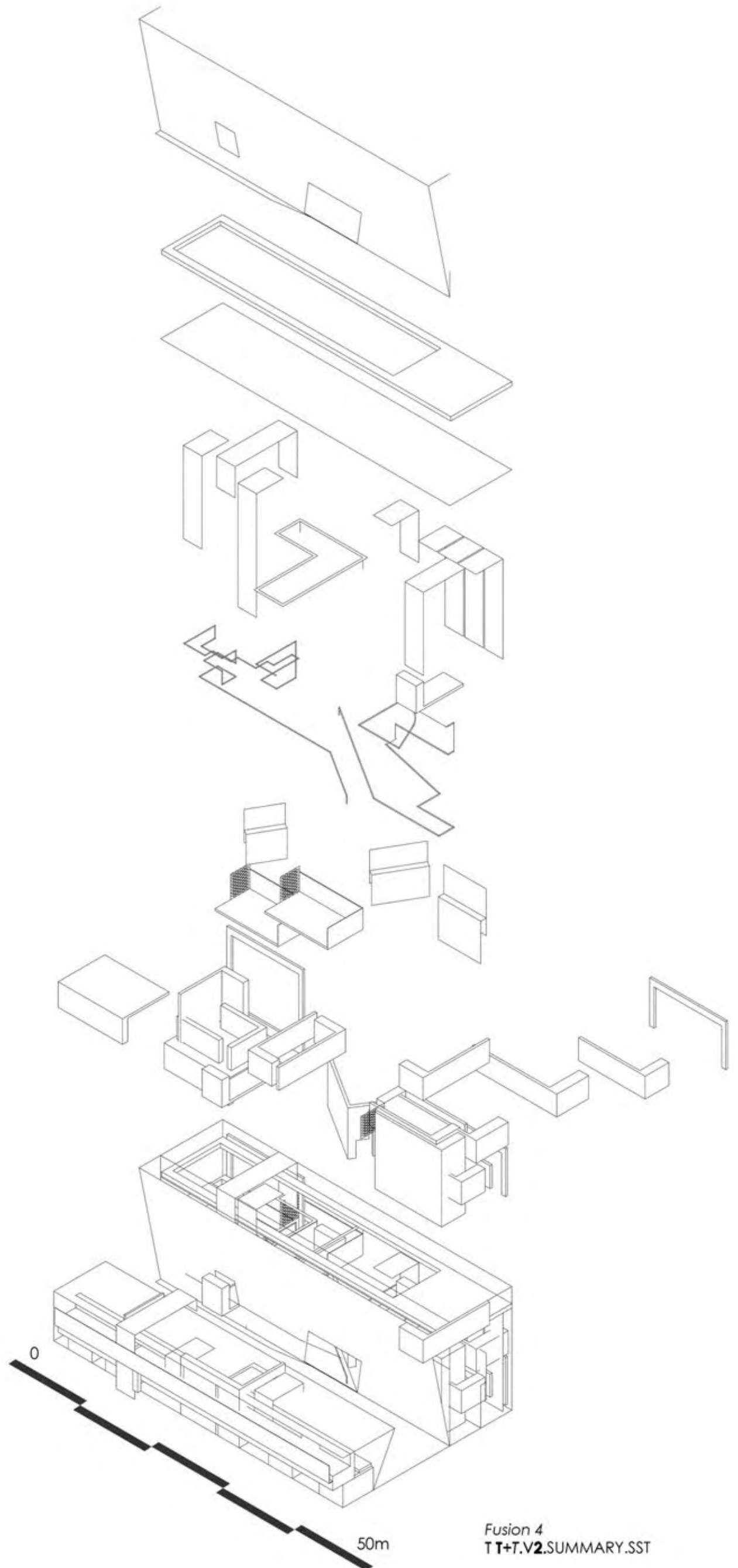
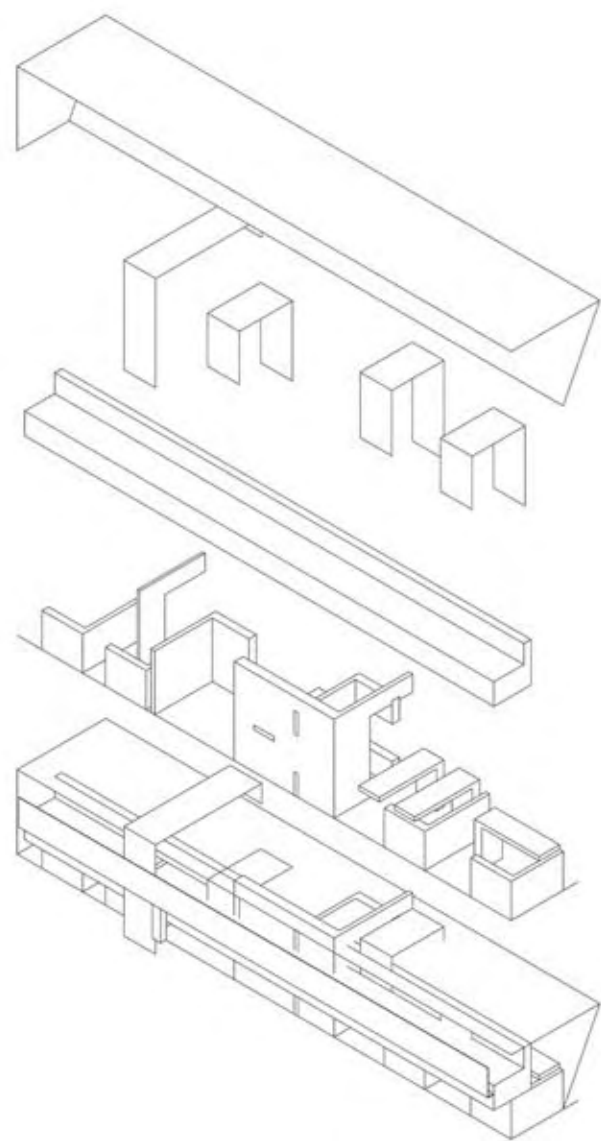
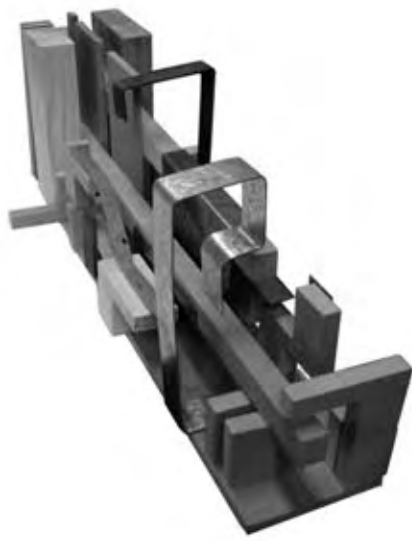


B.12

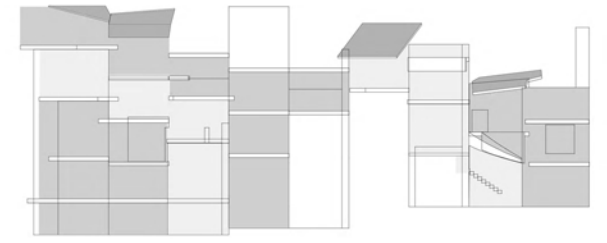
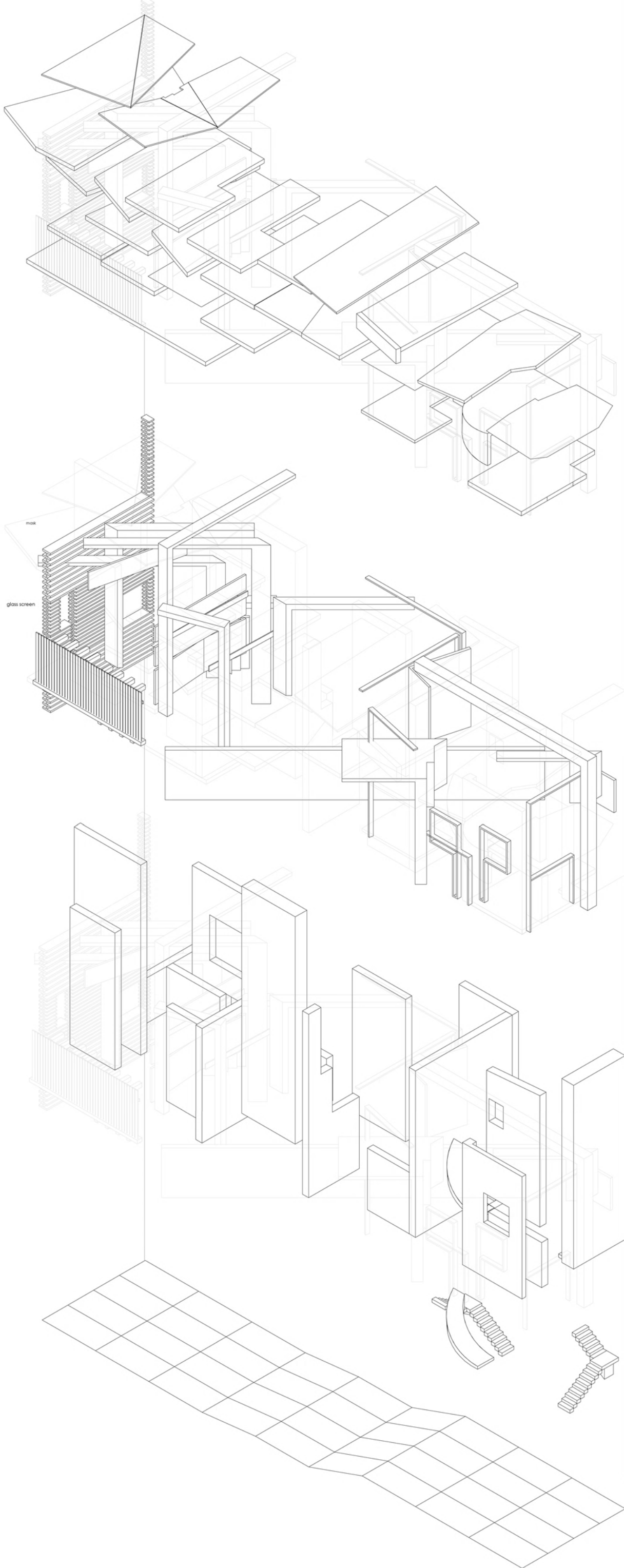


B.17

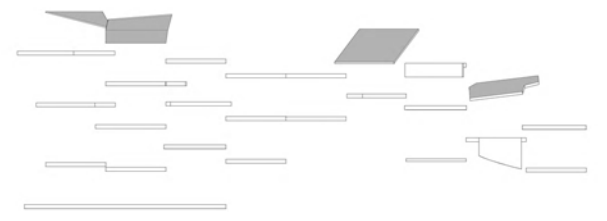
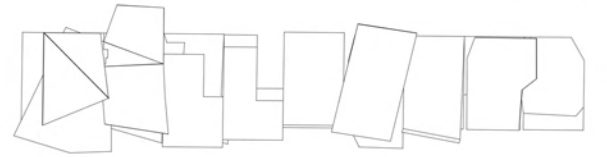




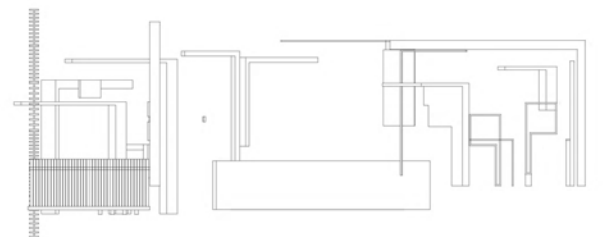
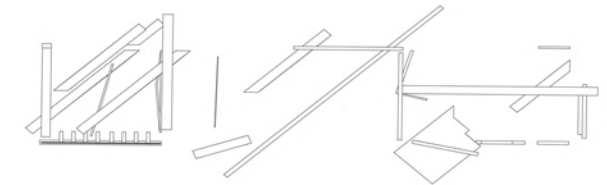
TECTONICS OF **THICK** AND **THIN**
Stitching Frankenstein



card levels - plan/section

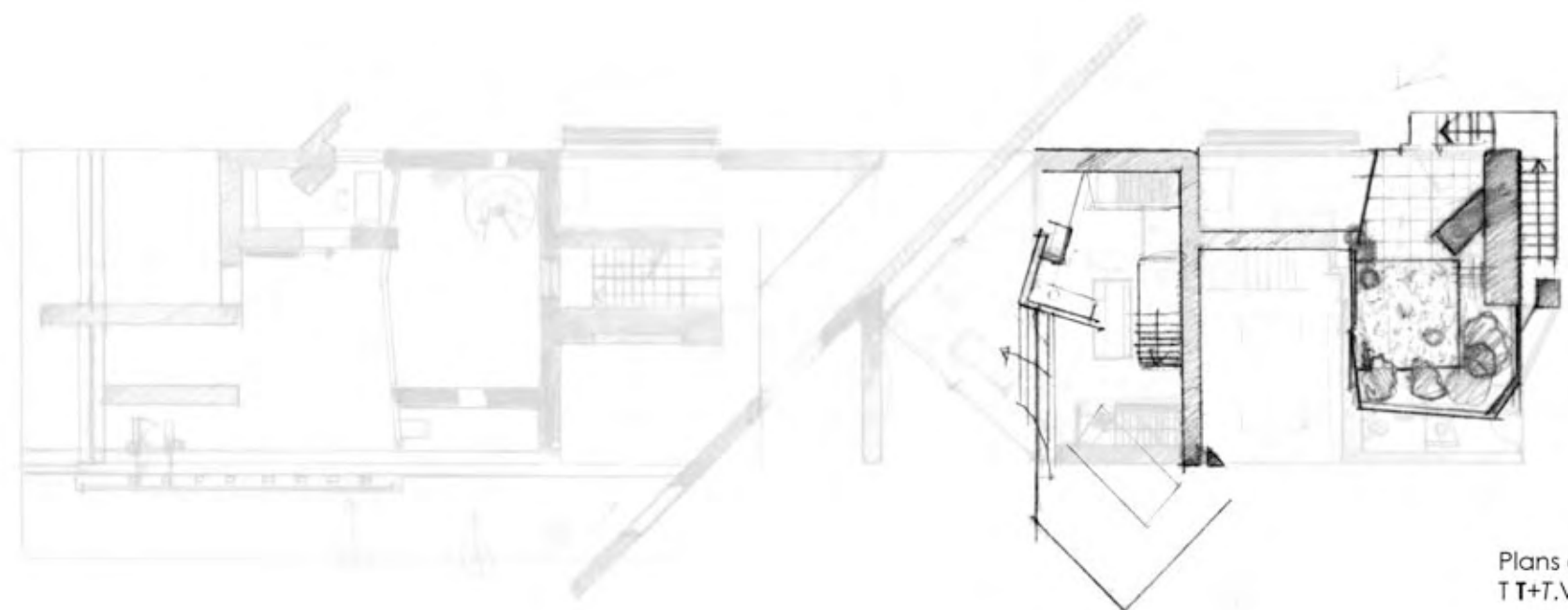
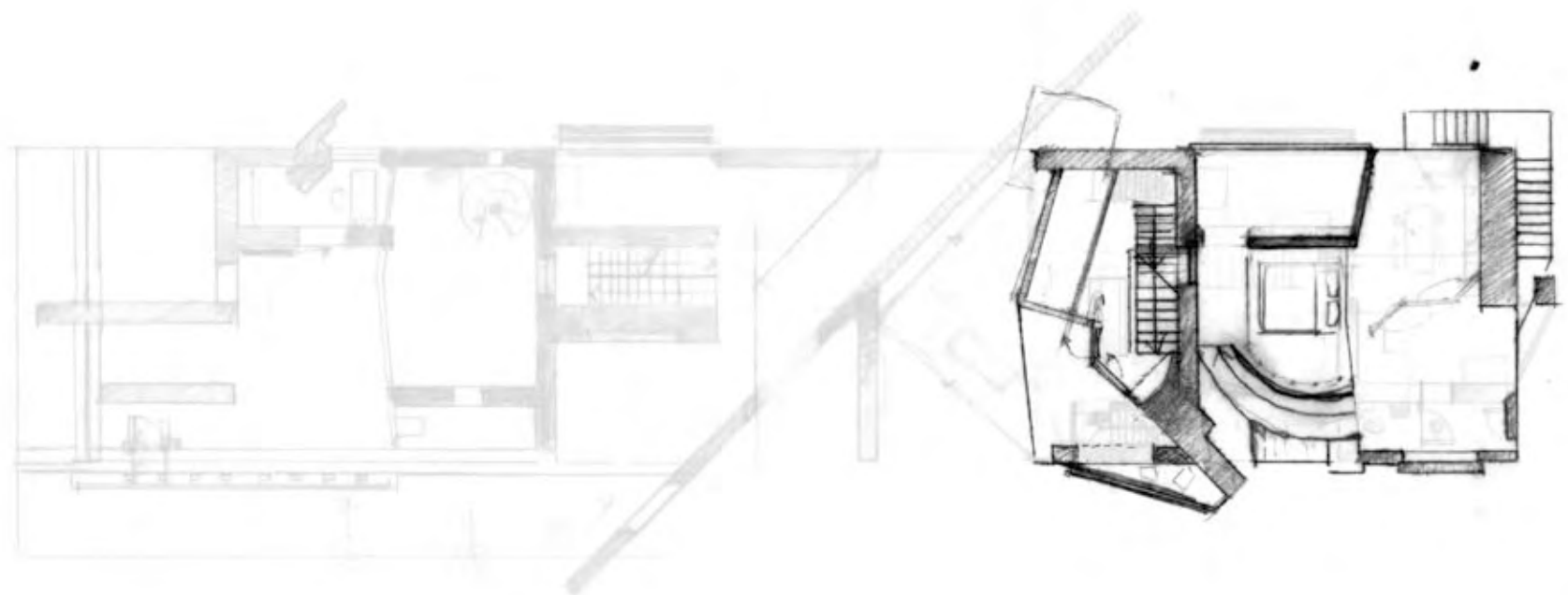
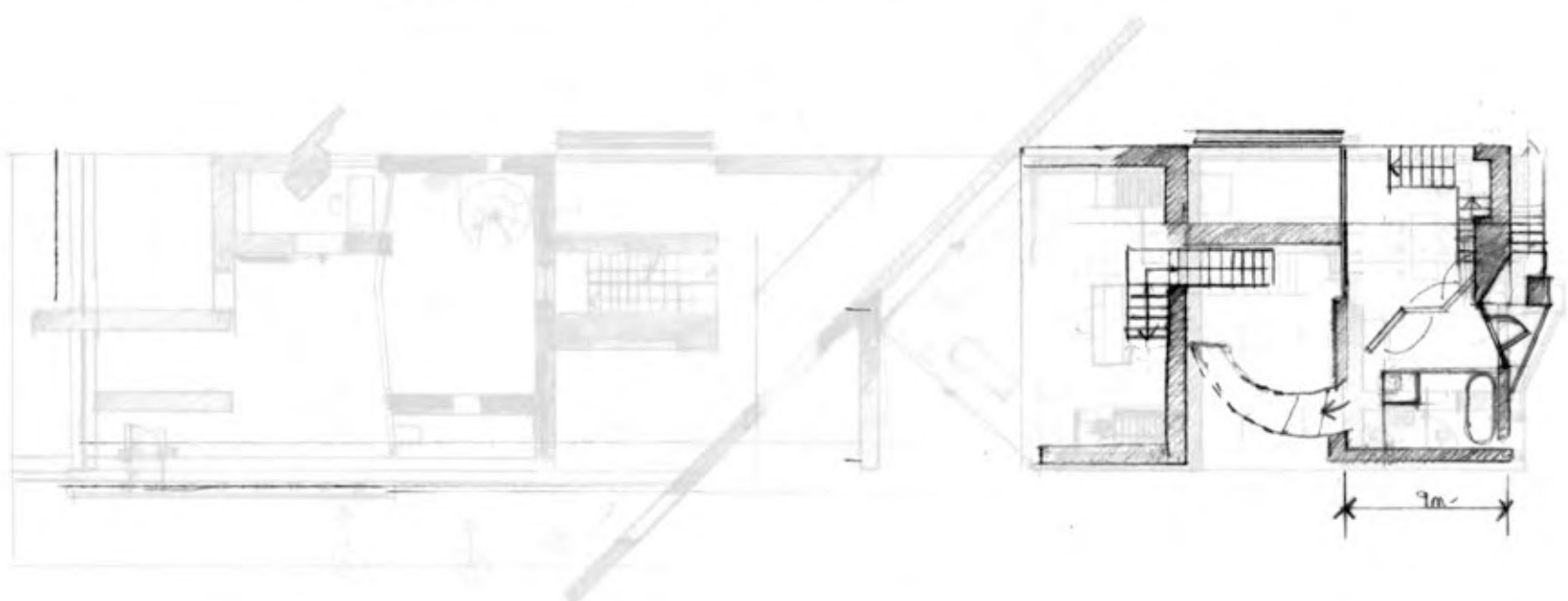
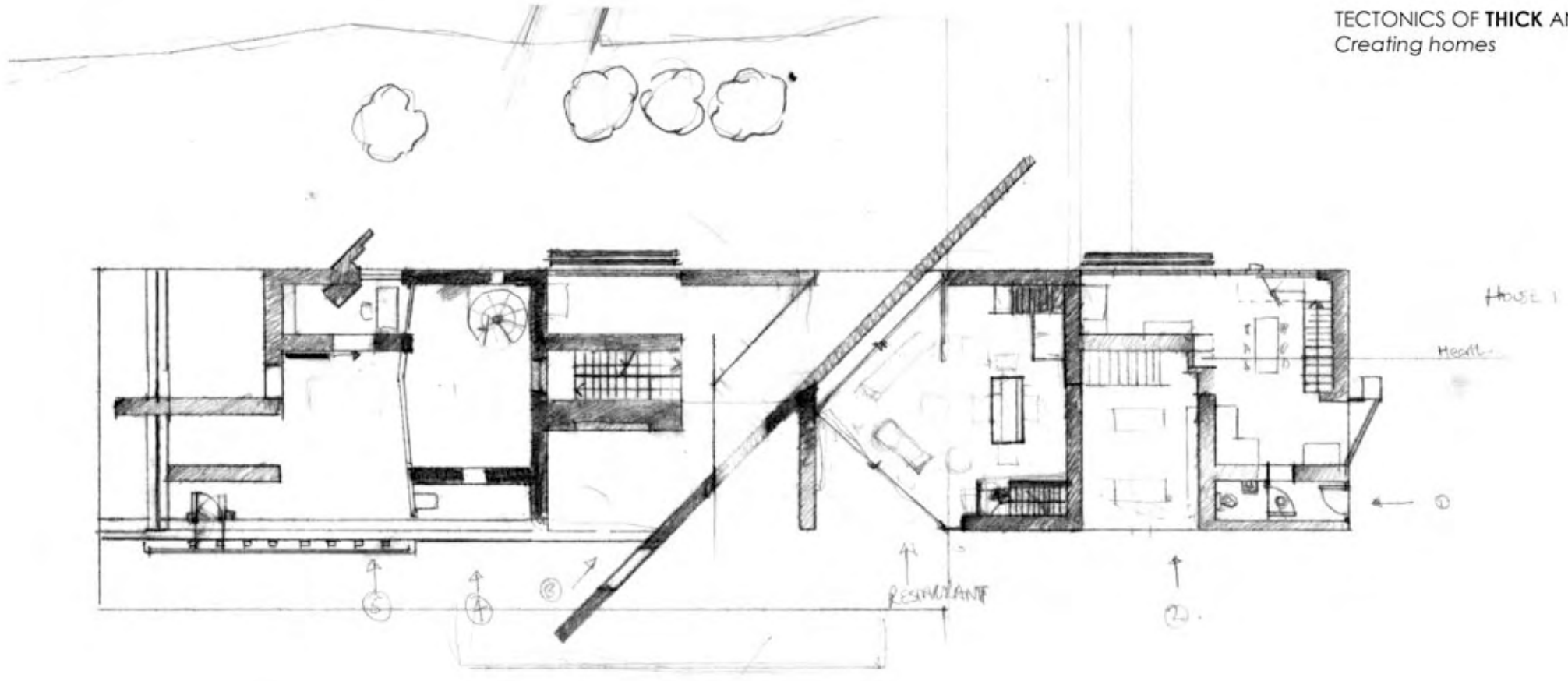


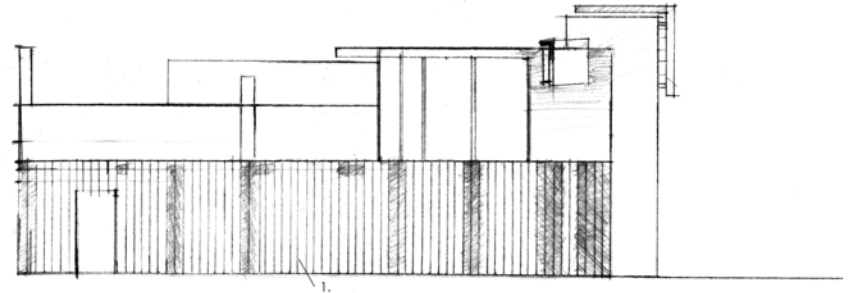
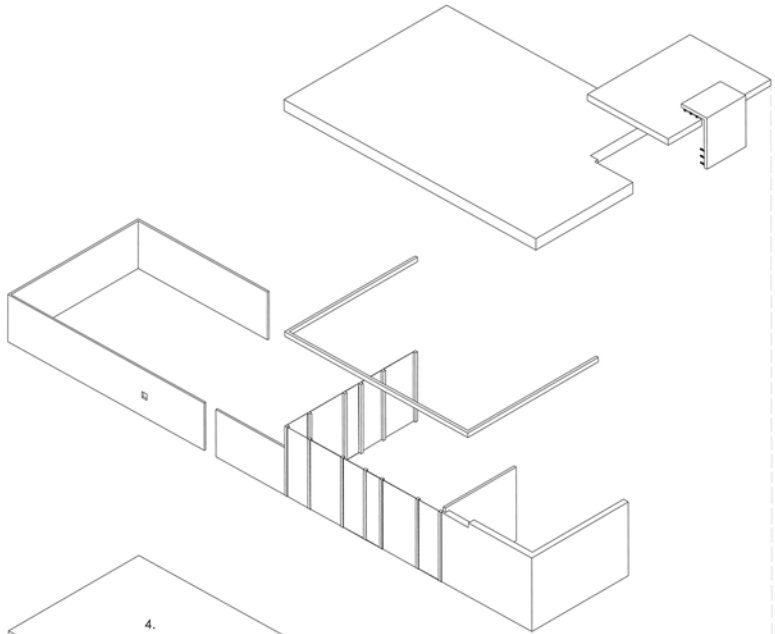
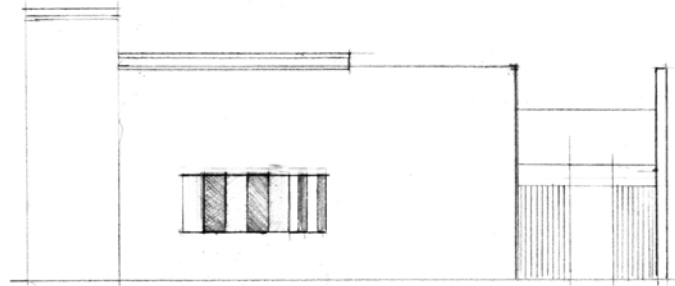
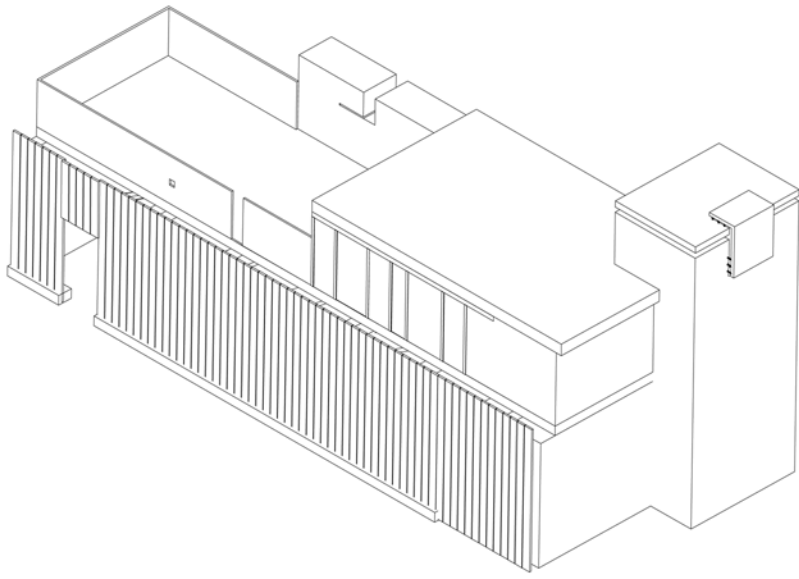
angle limbs - plan/section



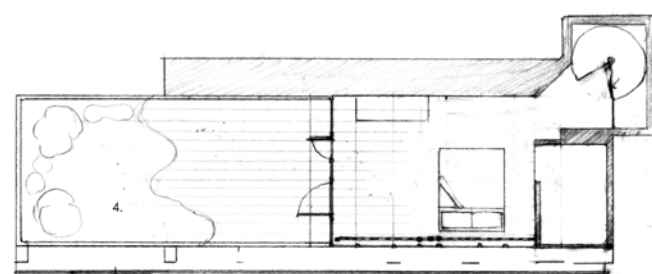
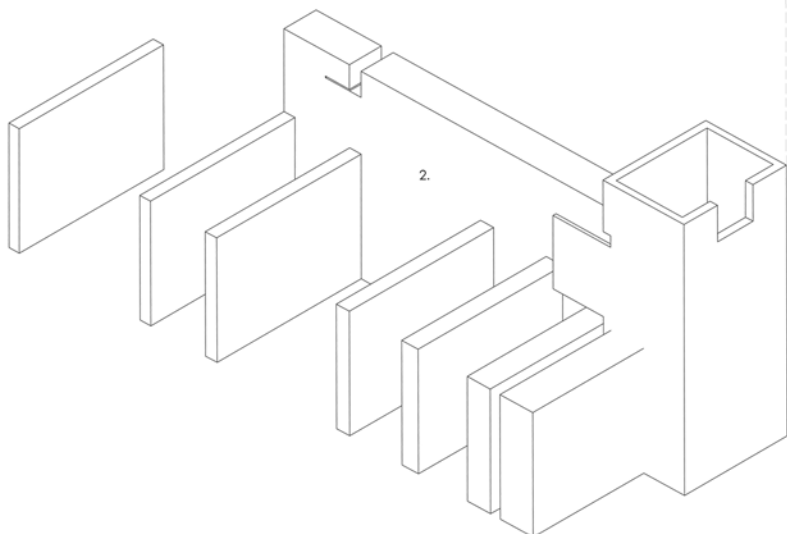
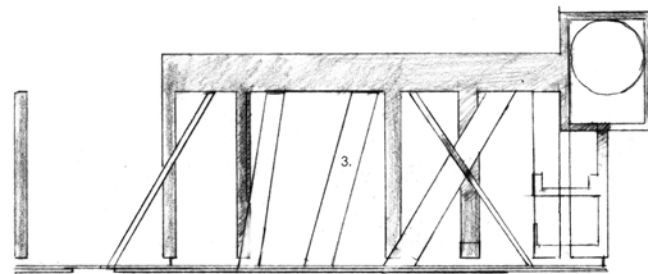
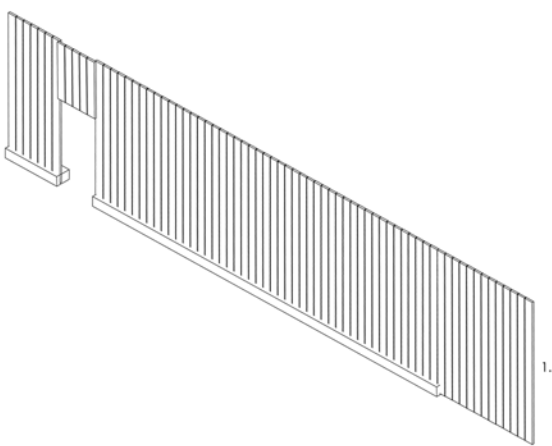
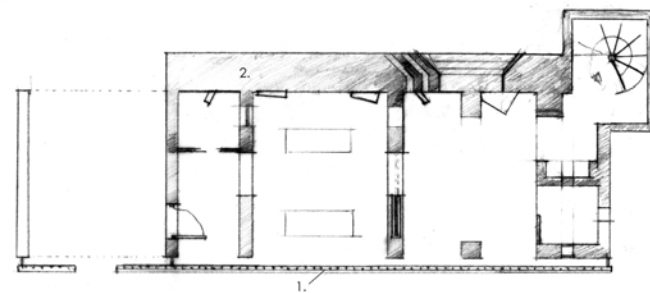
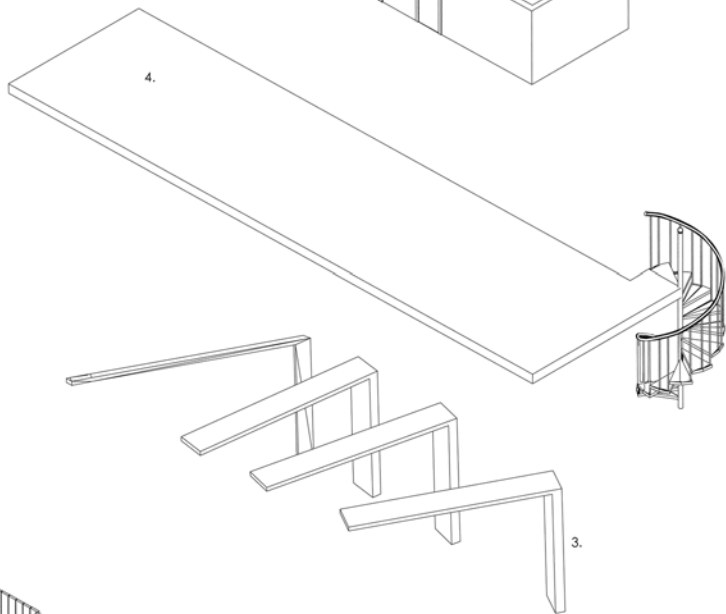
prime grid layout - plan/section

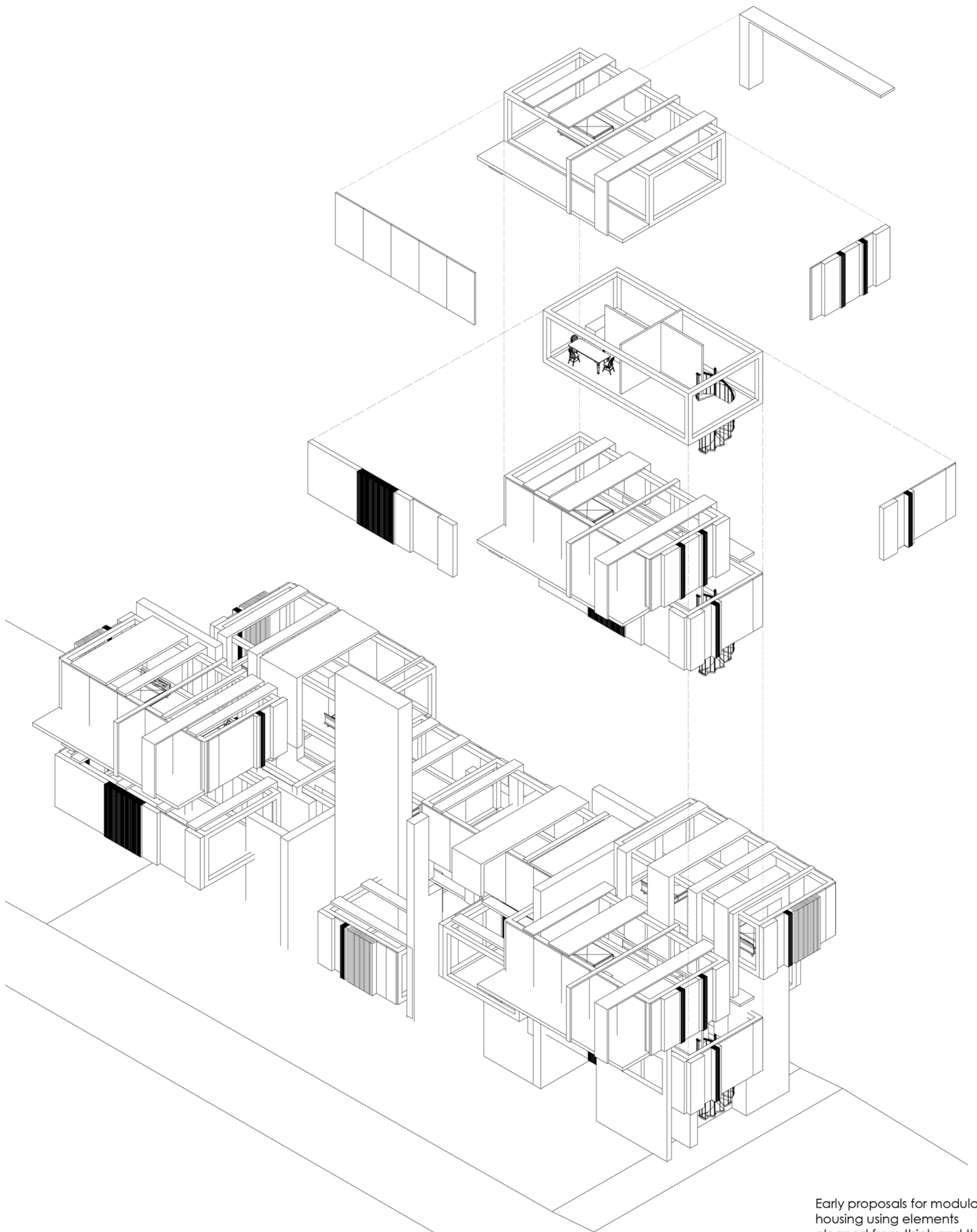




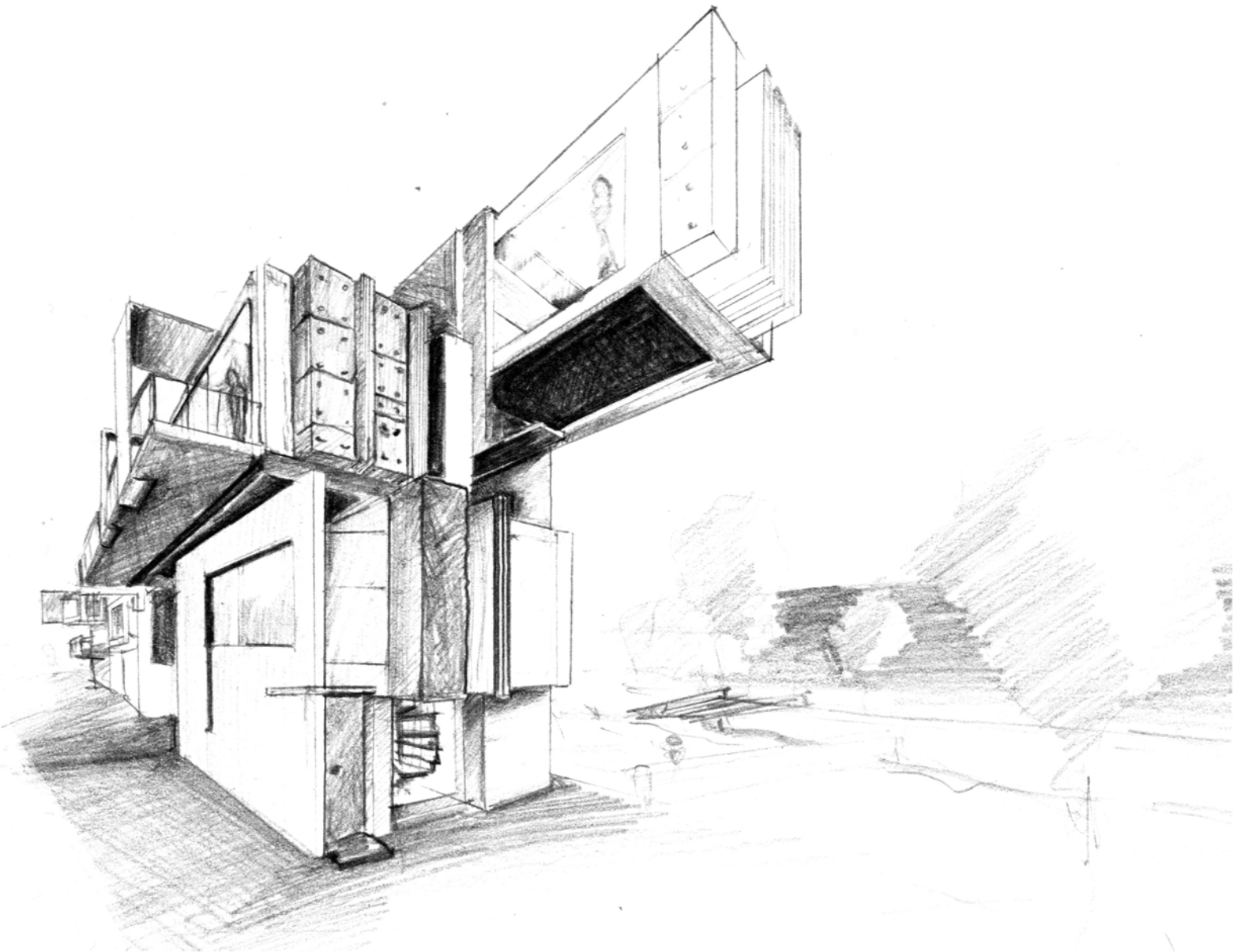


1. Translucent glass panel facade
2. Spine wall
3. L-shape limbs
4. Roof garden

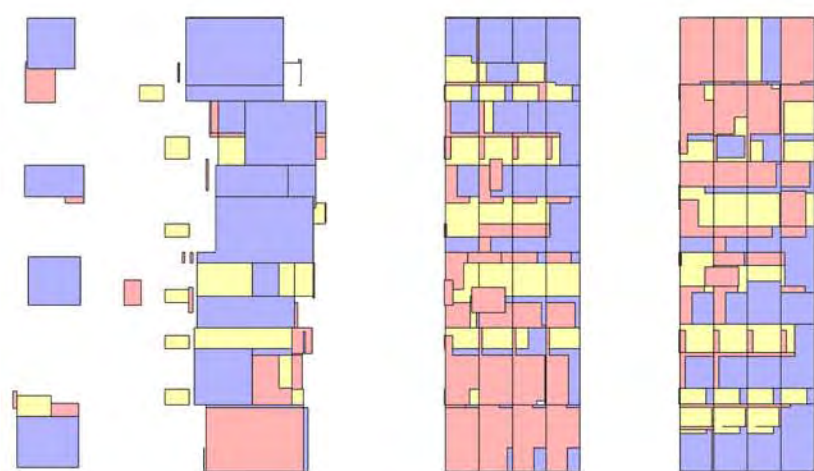
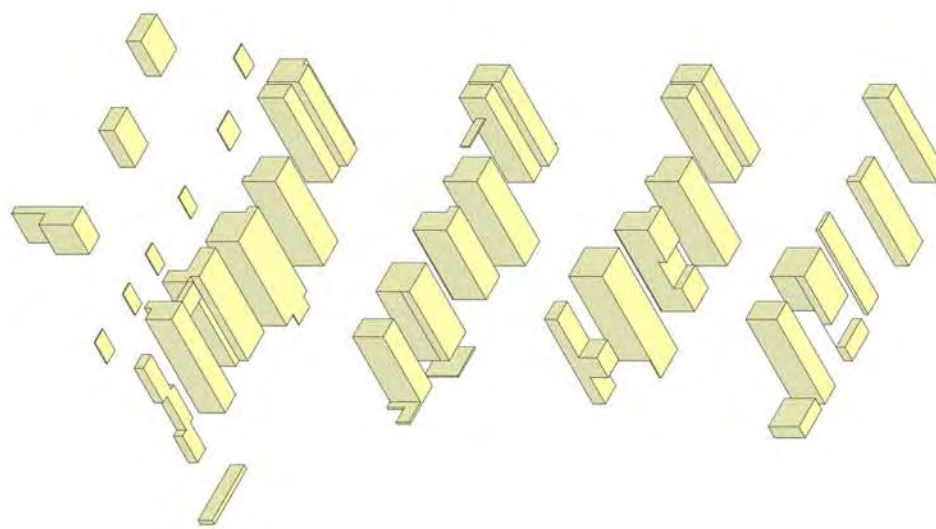
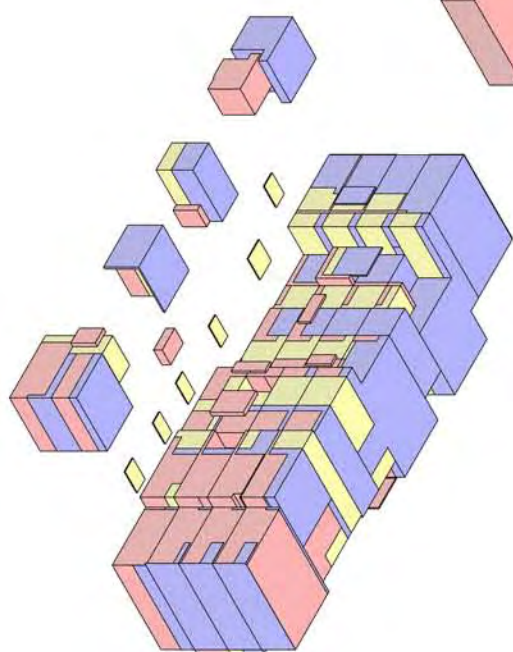
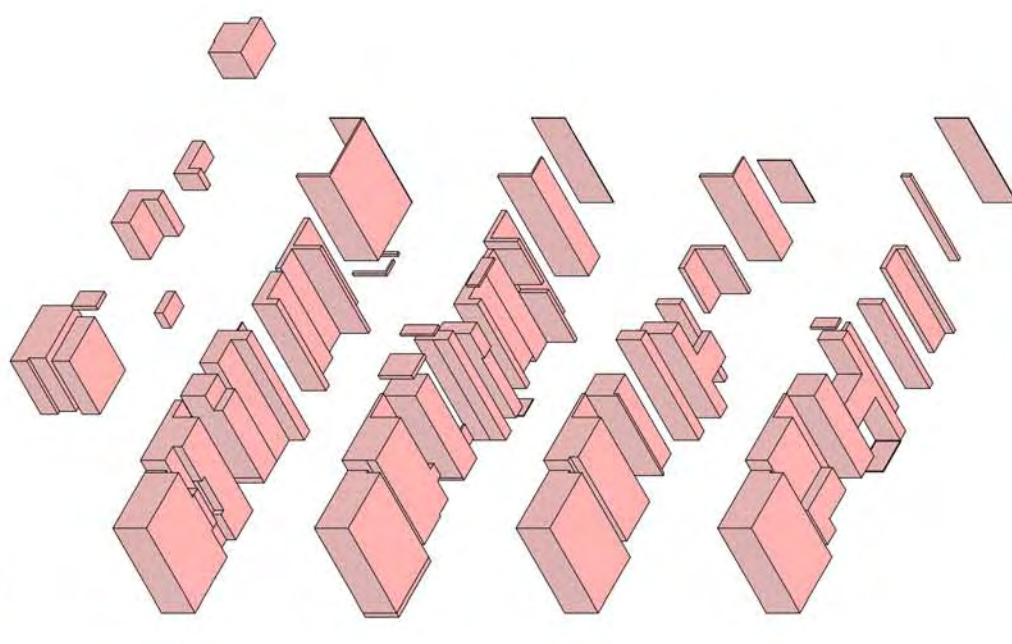
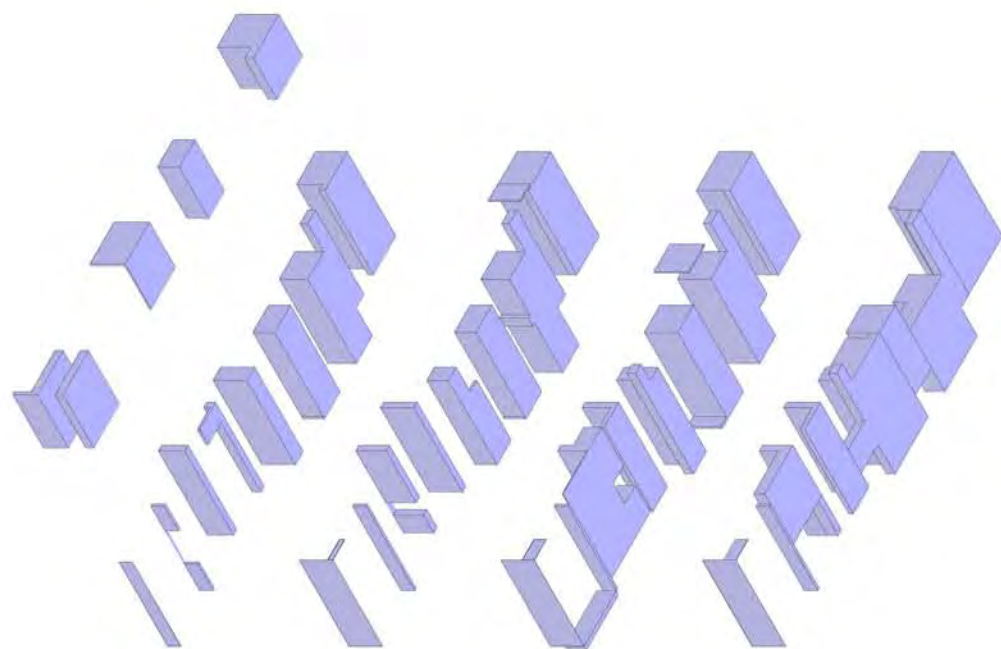




Early proposals for modular housing using elements gleaned from thick and thin tectonics



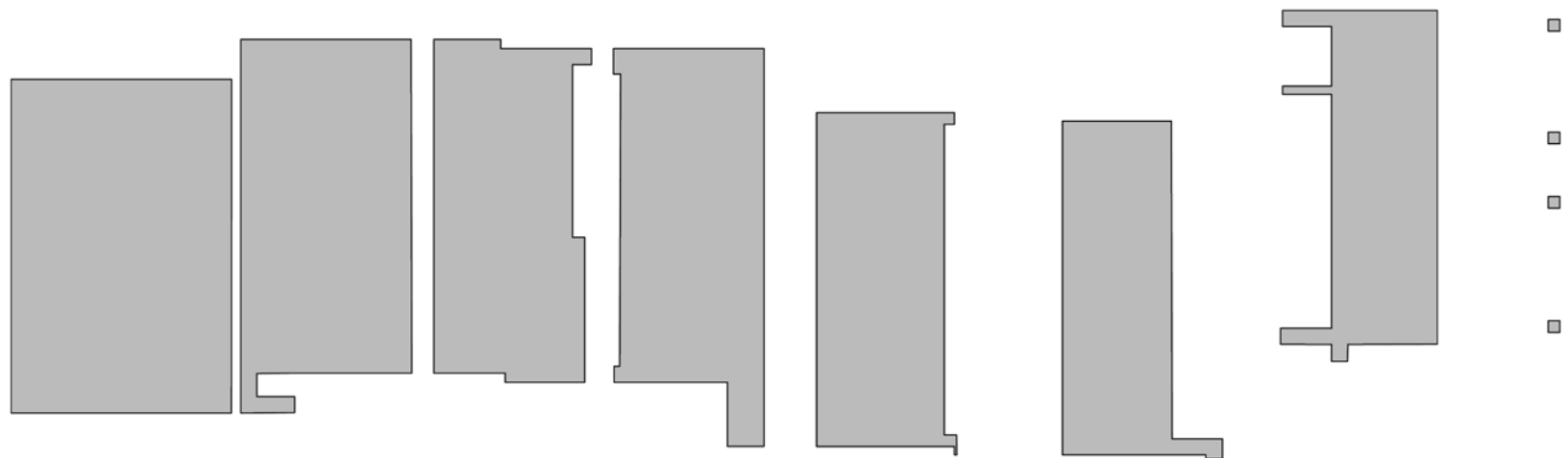
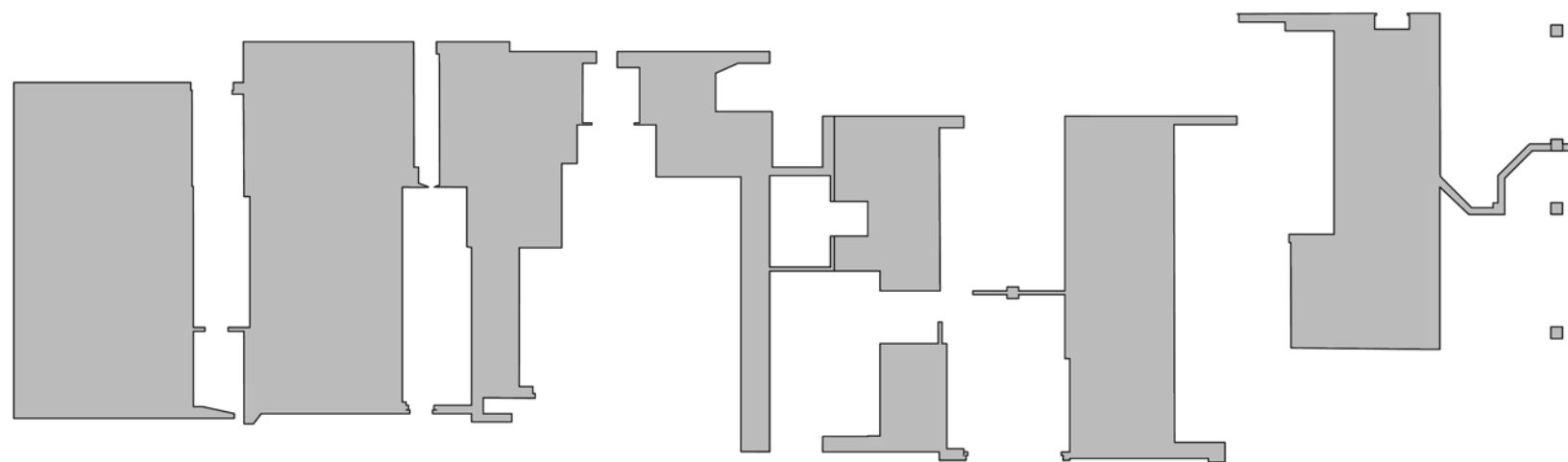
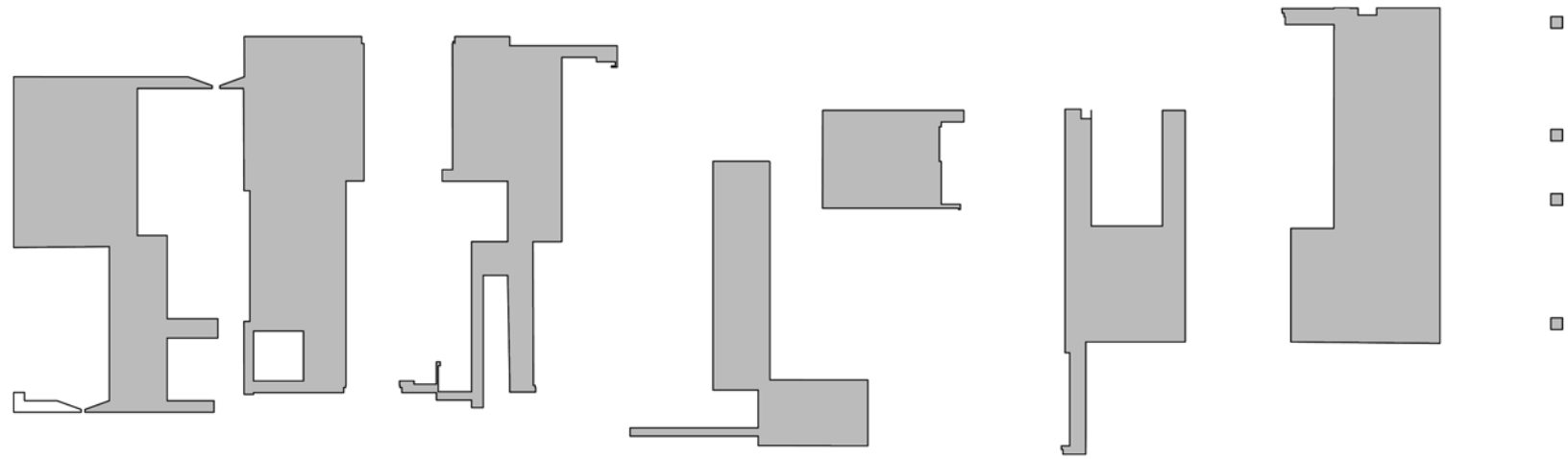
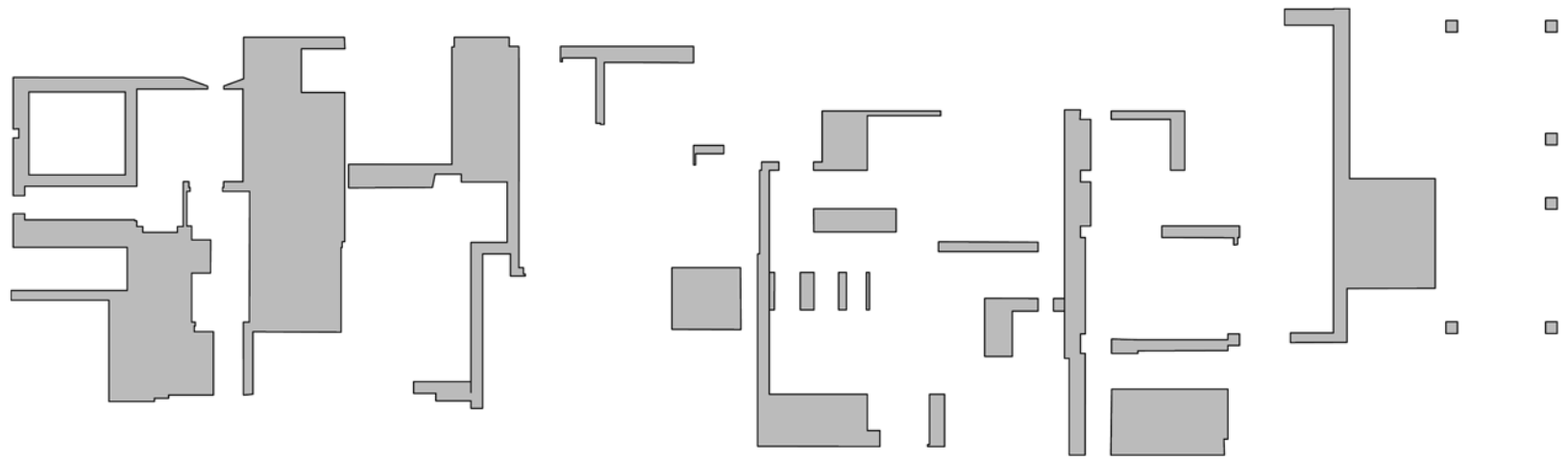


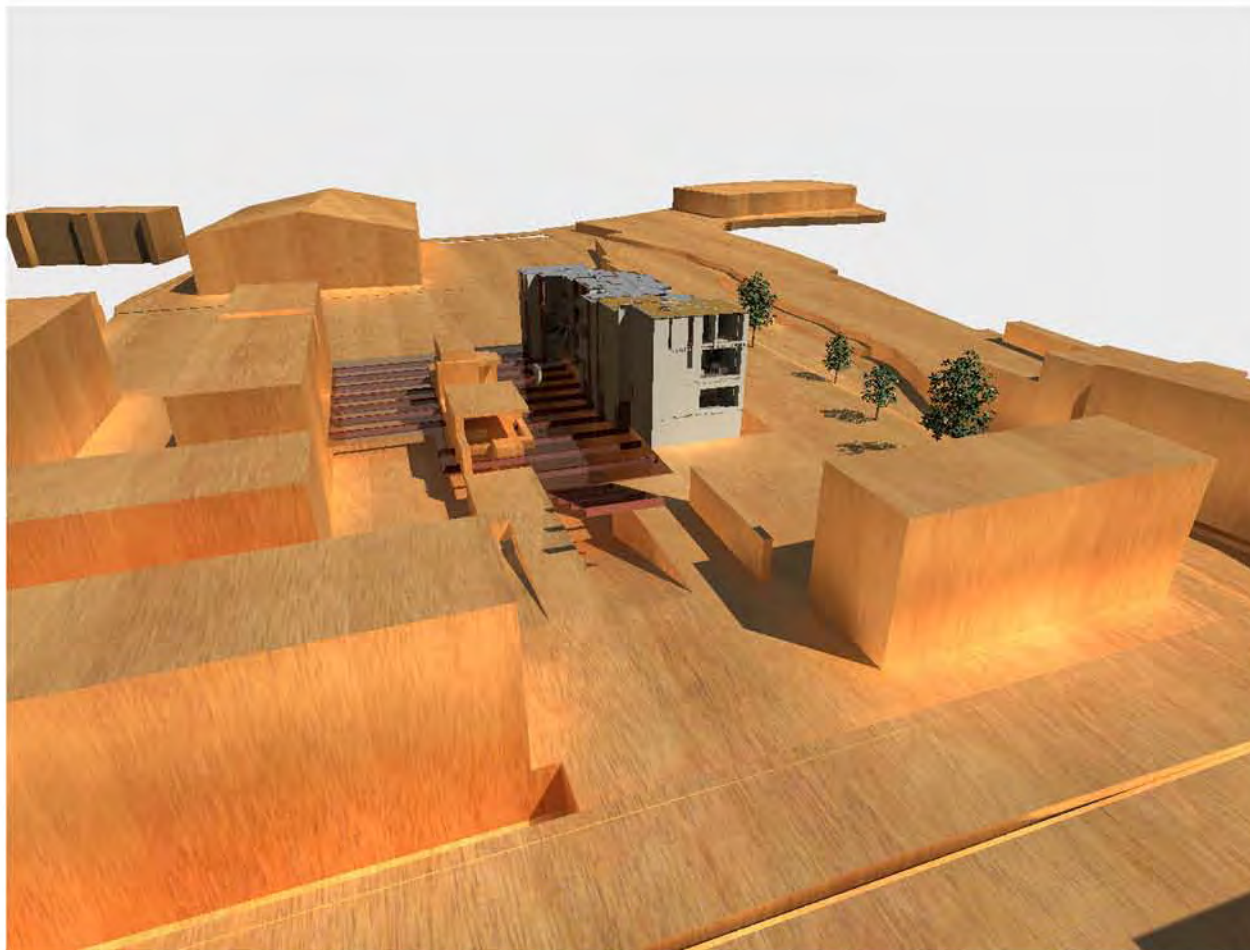
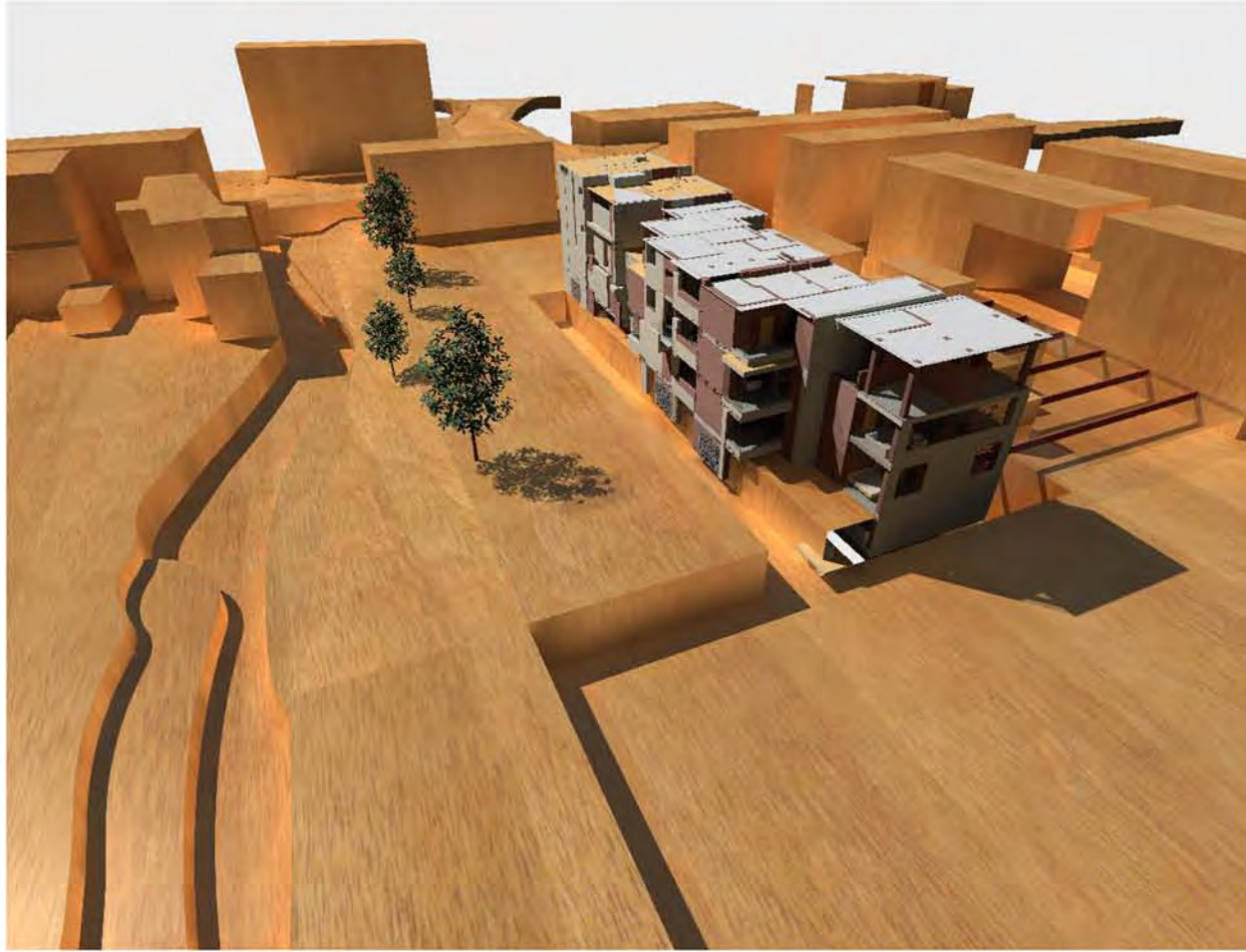


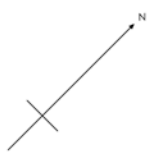
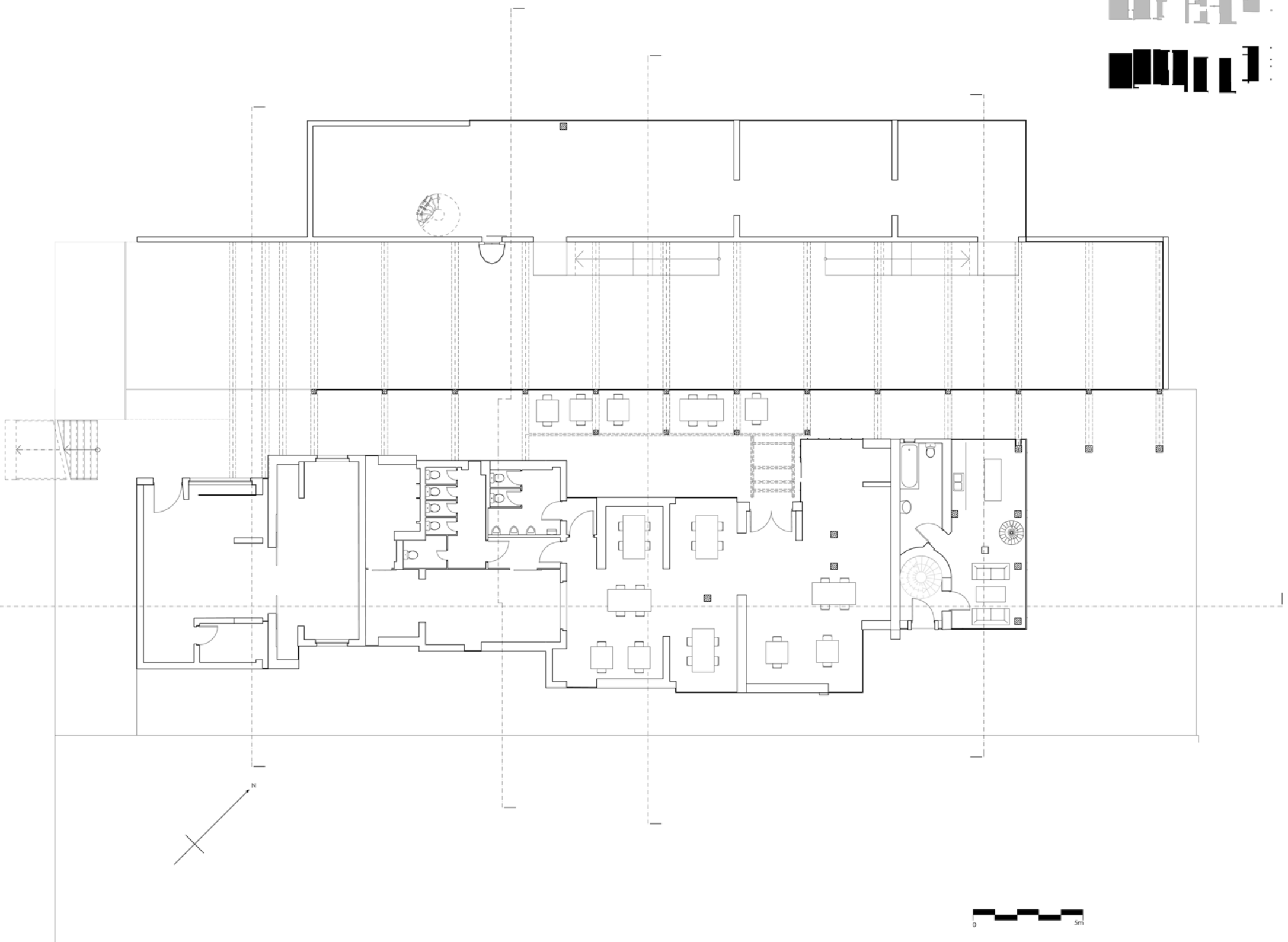
Ground - Thick - Red - Concrete

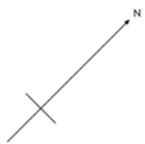
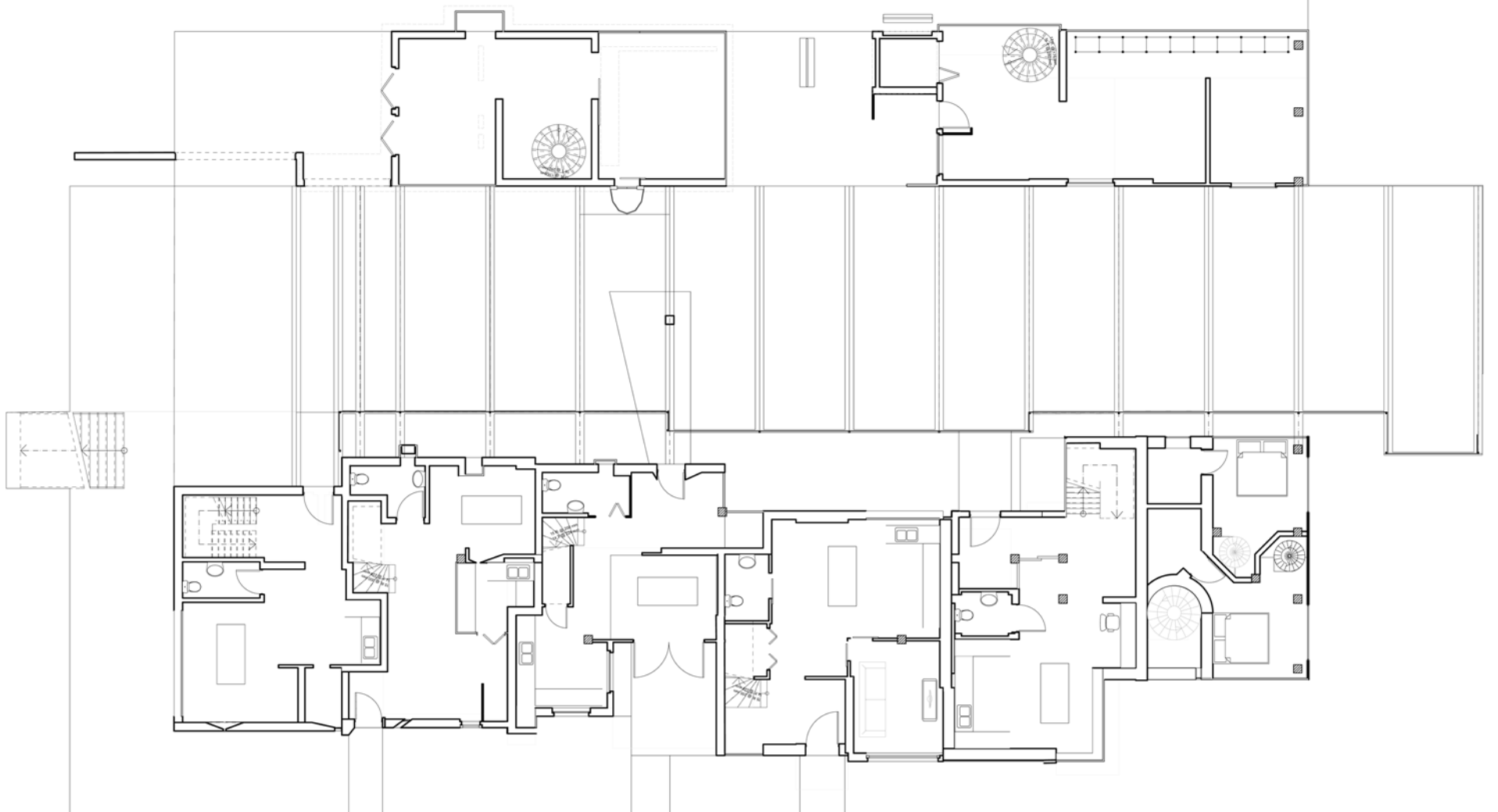
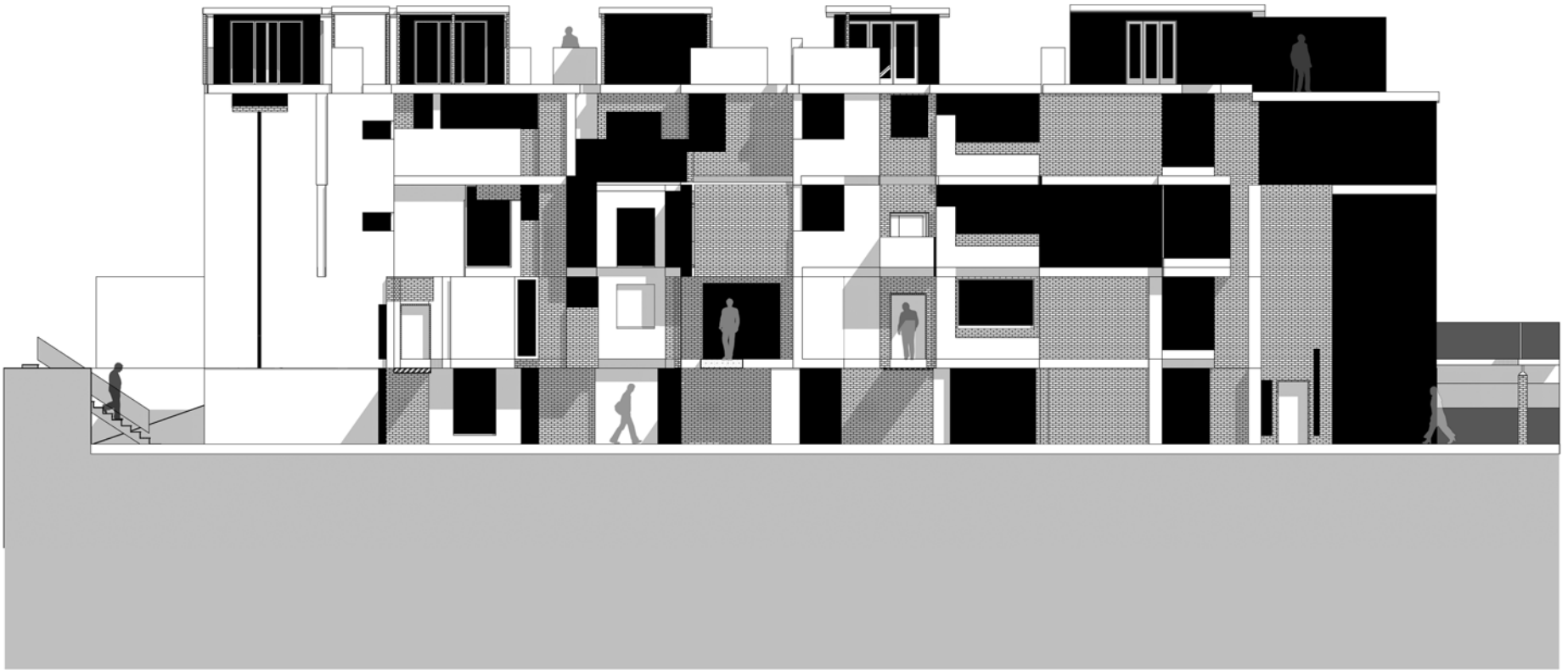
Water - Thin - Blue - Glass

Manufacture component - Intermediate - Yellow - Brick

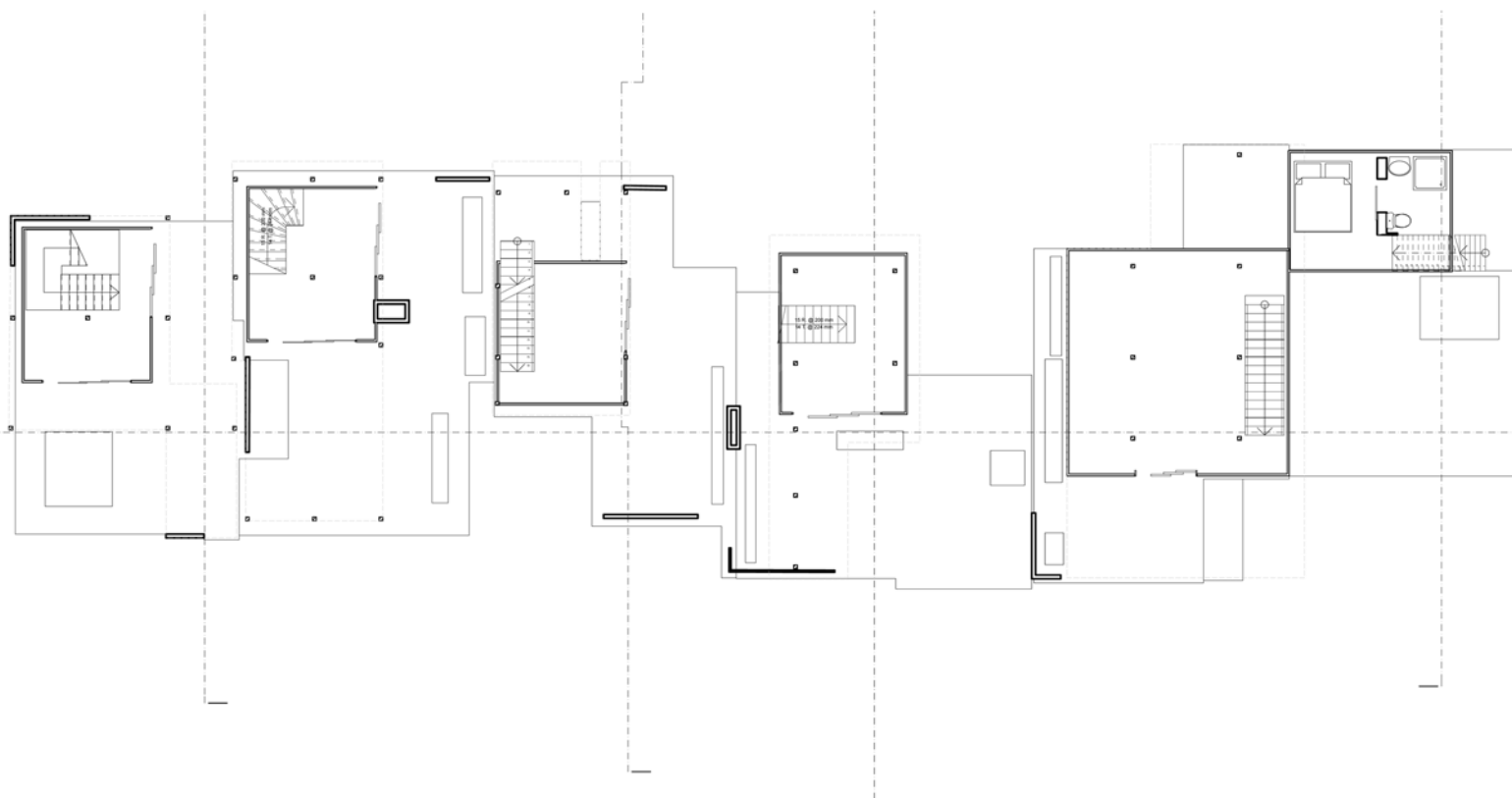
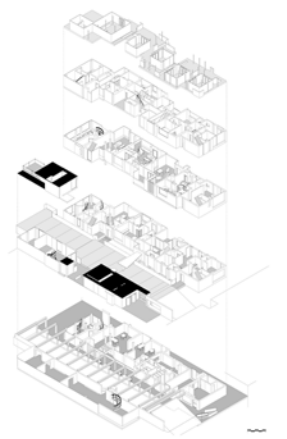
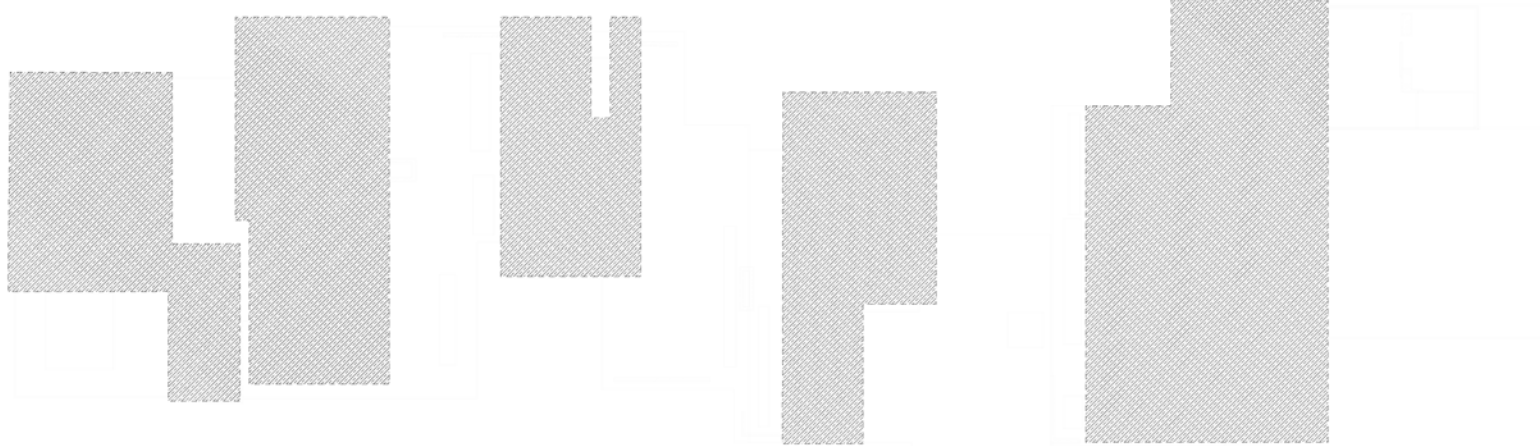
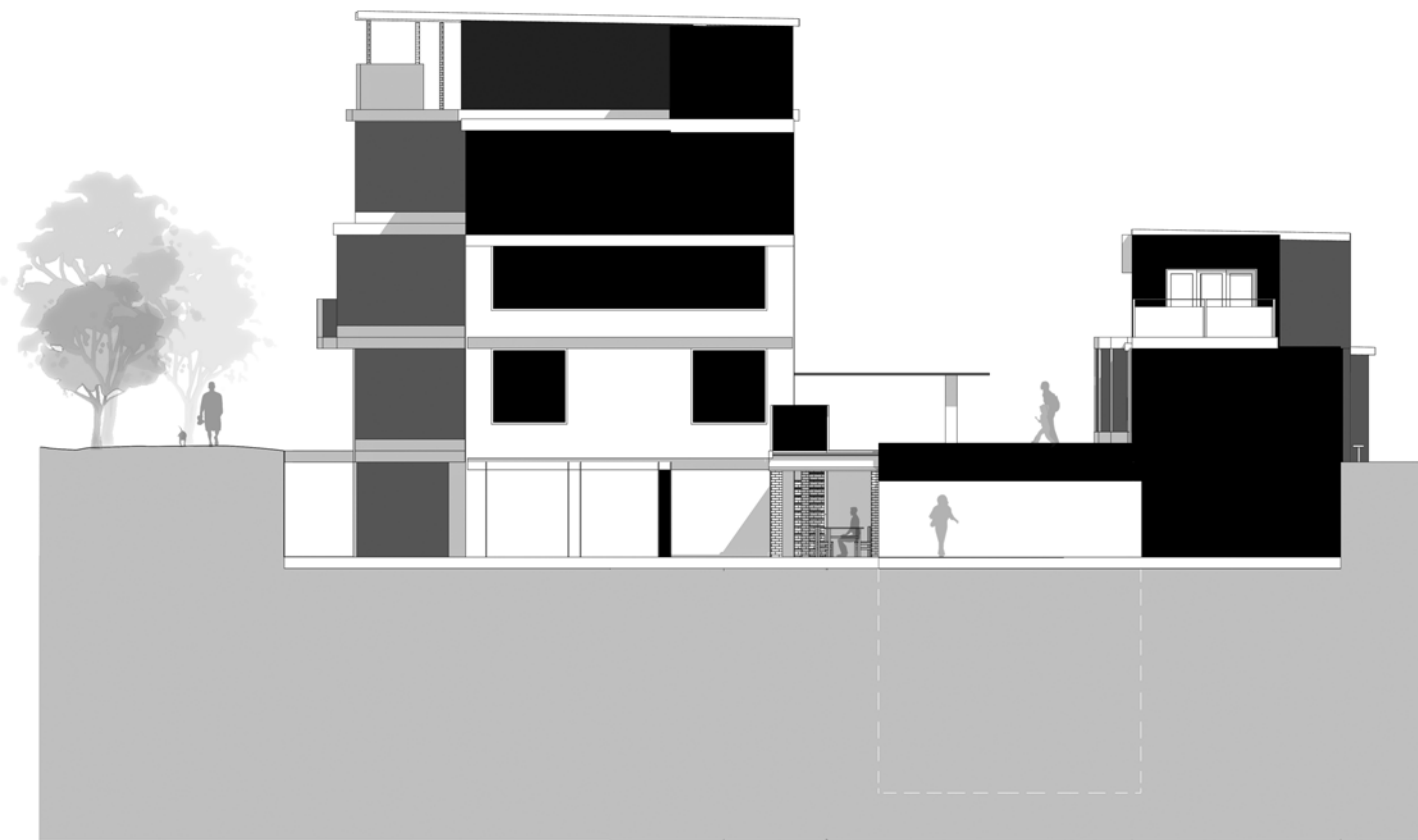


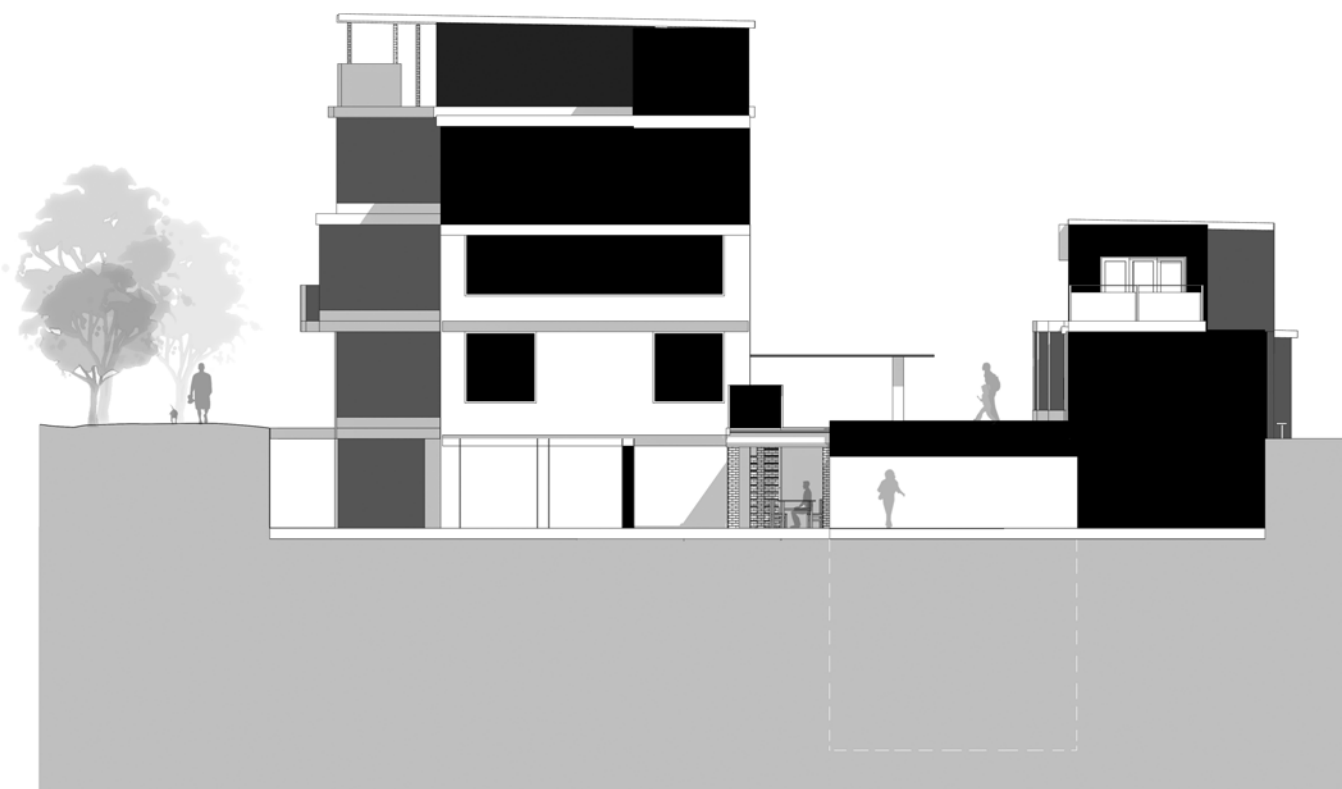




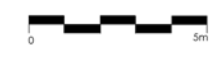
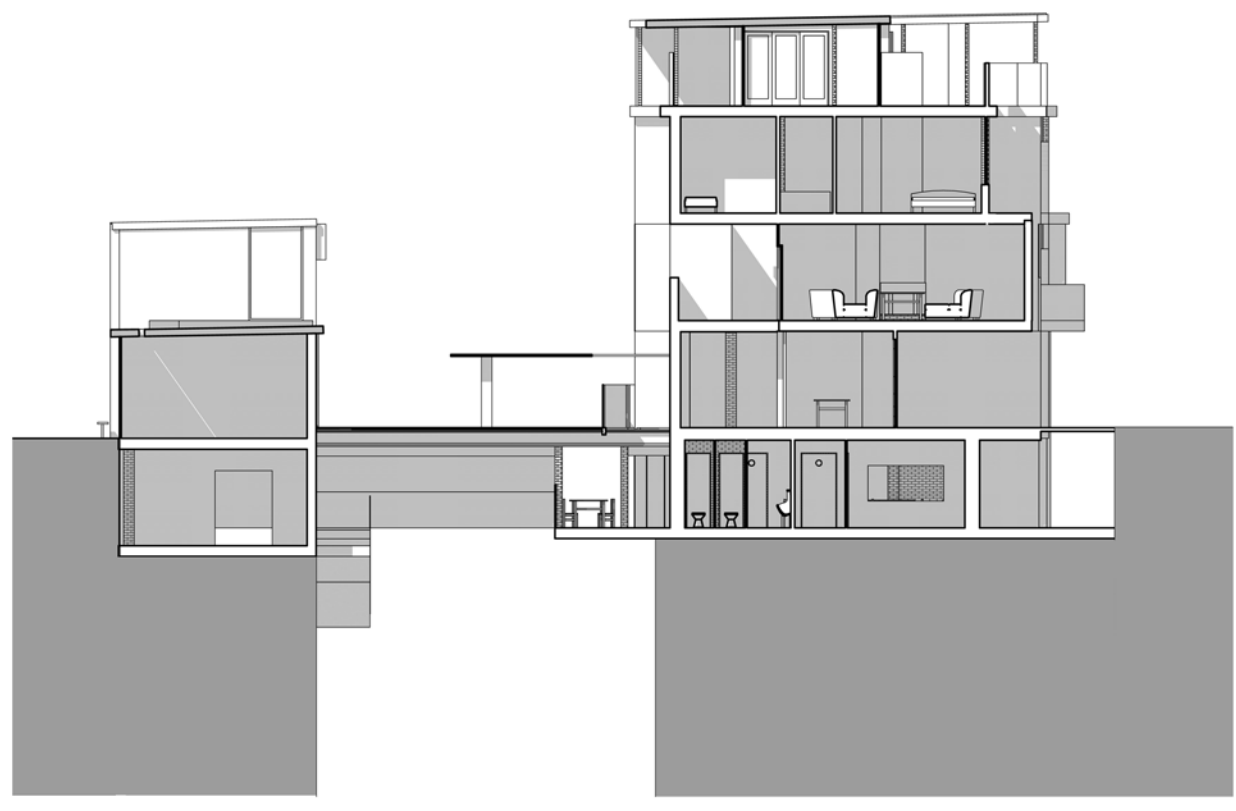
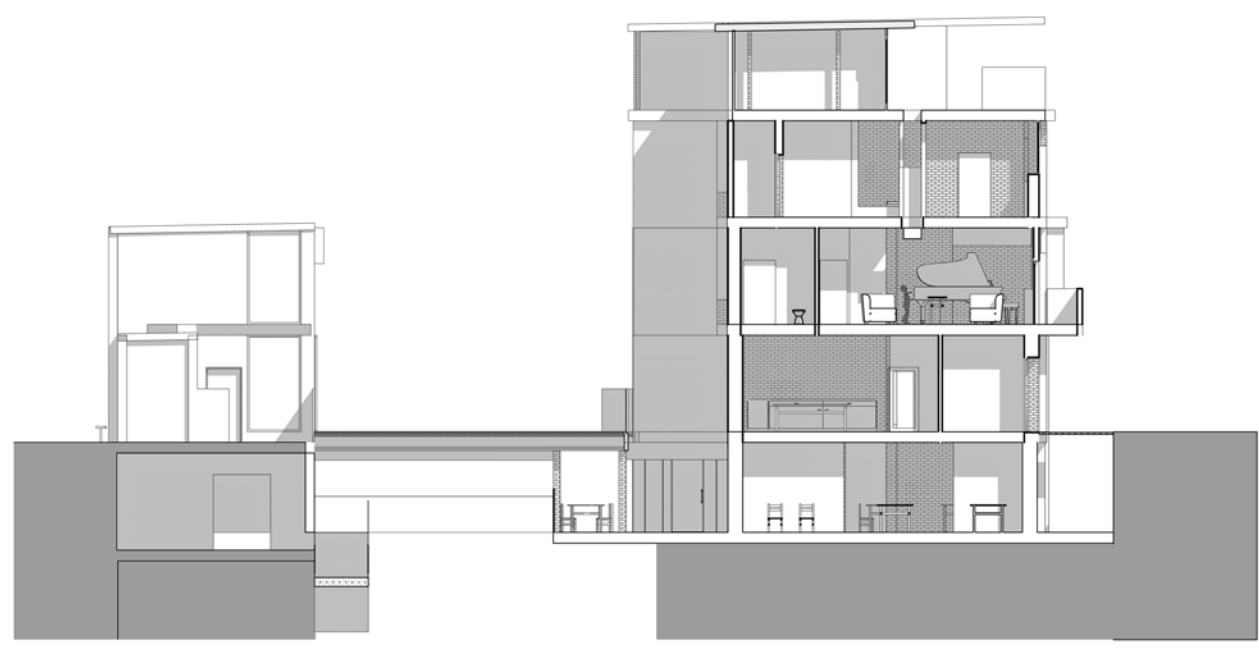
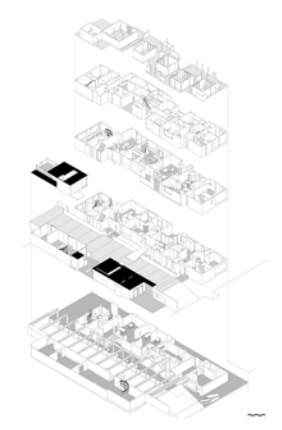


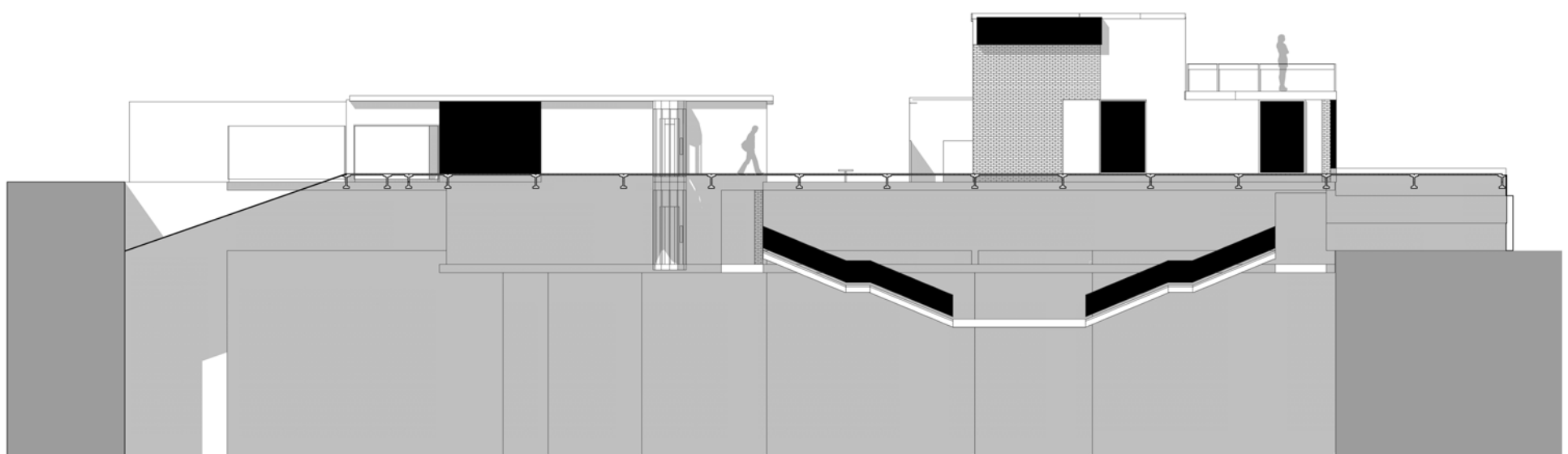
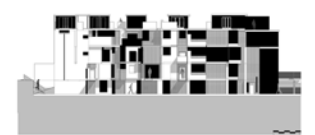
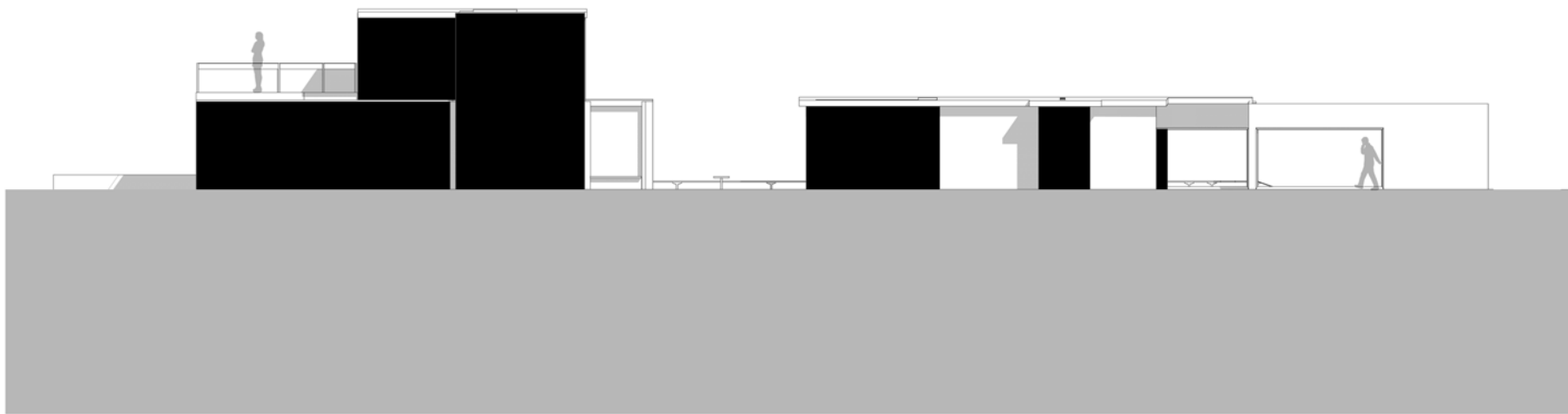
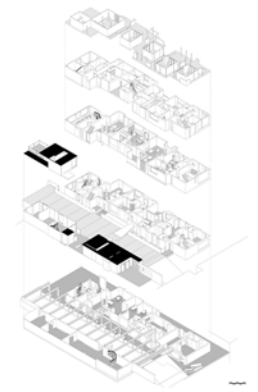


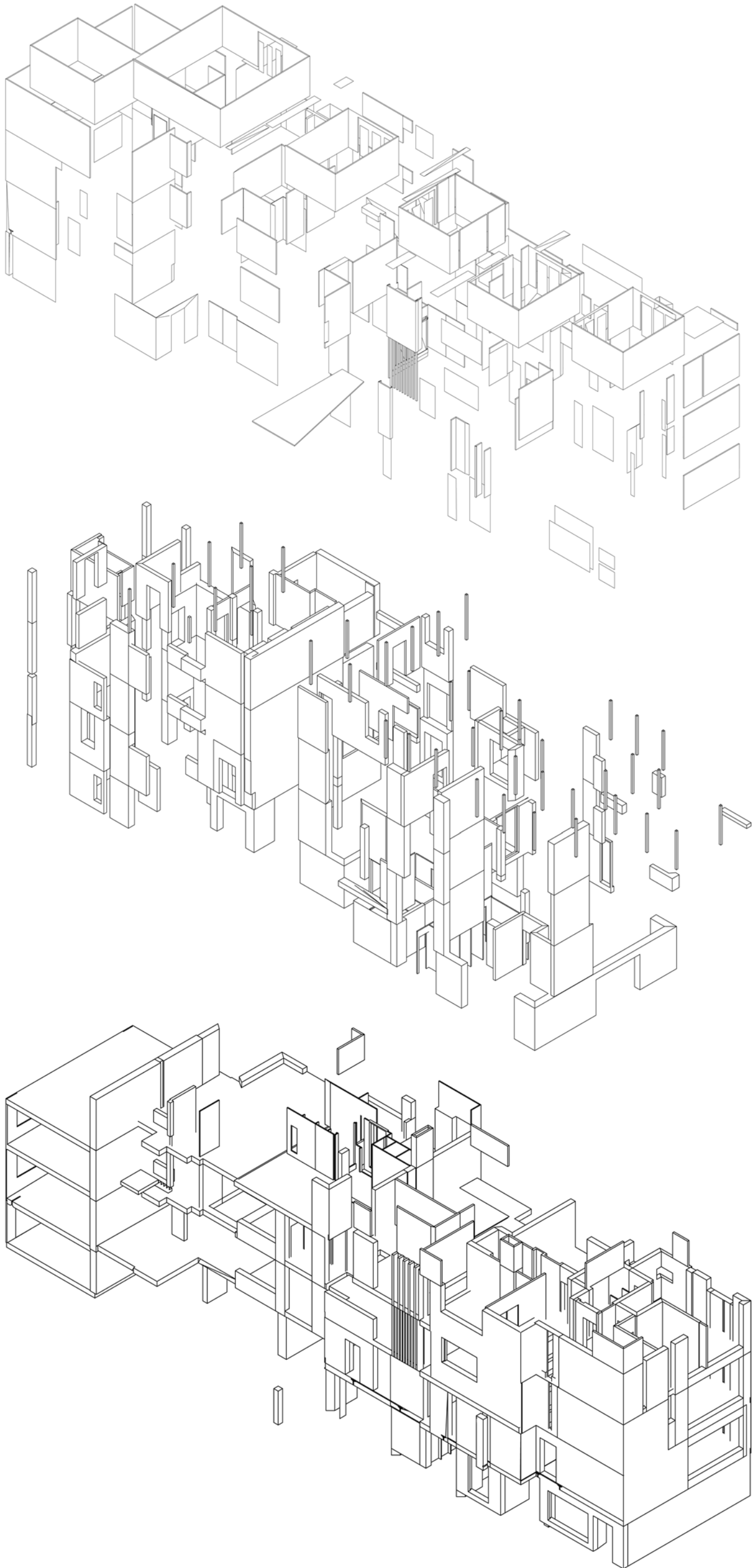


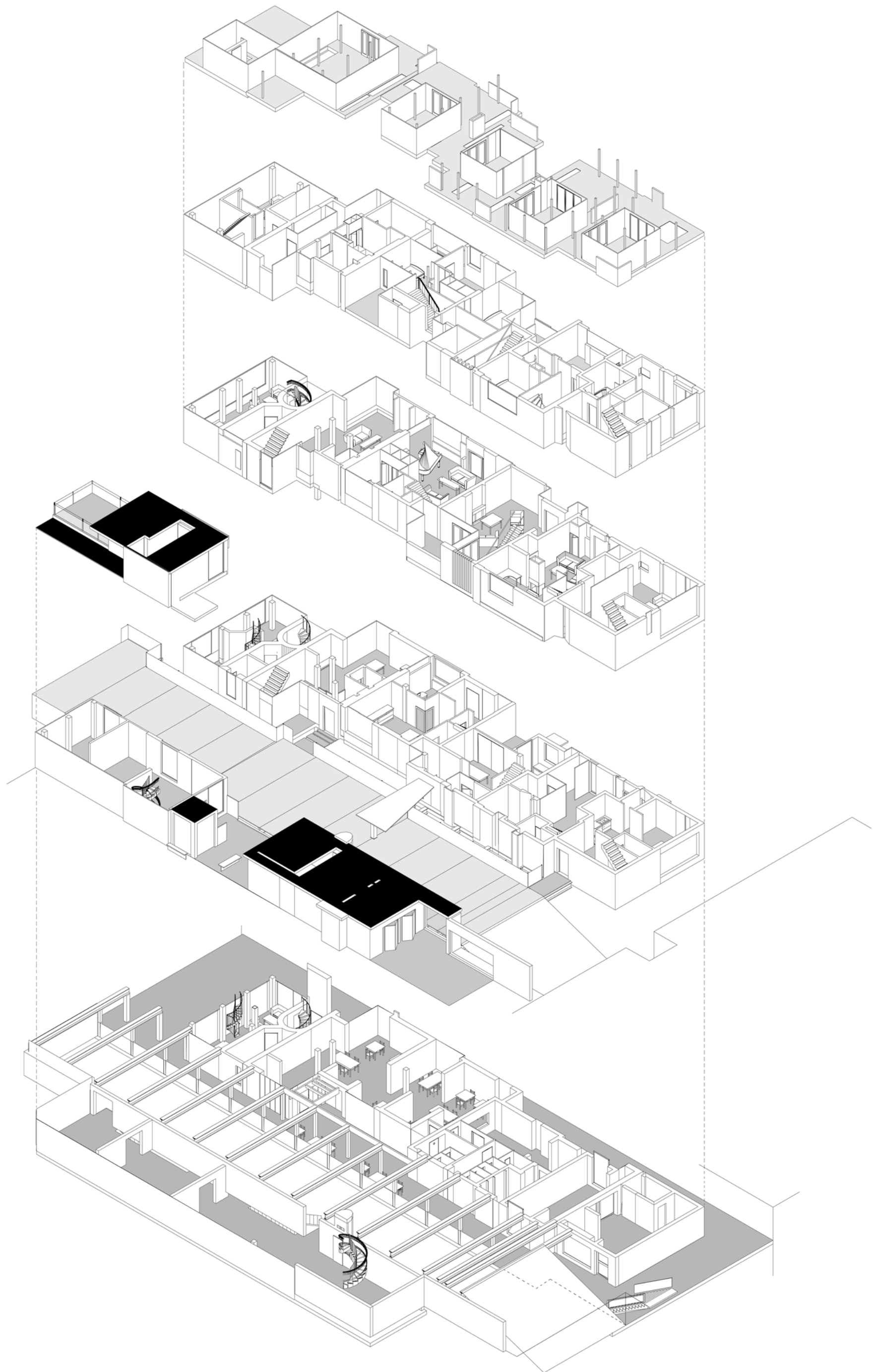


















Wayfarer
[Journeying, travelling; an instance of this.]

